

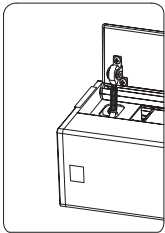
Pairing/Unpairing
(Remote have been paired at factory)
Disconnect the power supply for 10 seconds and then reconnect, press the Up and Stop button simultaneously within 10 seconds of reconnection. The motor will rotate forward and then backward once signaling a successful pairing.
Repeat this process to unpair a remote. Repeat the process an odd number of times to pair, and an even number of times to unpair.

Electronic Positioning
Use paper clip to press Positioning Setting Key on the back of the remote until light turns on, set the projection screen at desire position using the Jog Up and Jog Down buttons, press the Stop button to confirm position. Setting is successful if the light on the back of the remote is turned off.

Anti-Pinch Function
The decorative door is equipped with anti-pinch function to protects hands or objects while screen is in operation.

III.Decorative door anti-pinch function

The decorative door of this product is equipped with a flexible door opening and closing device, which can protect hands or objects from accidentally extending into the screen when closing the door.



IV. Maintenance

Ultra-short throw ambient light rejection fabric:
DO NOT USE RAG OR PAPER TOWEL TO WIPE
• Use brush provided to brush lightly horizontally along the texture of the screen to remove dust or other fine particles.
• For light-colored smudges that affects viewing, try removing with residue-free tape.

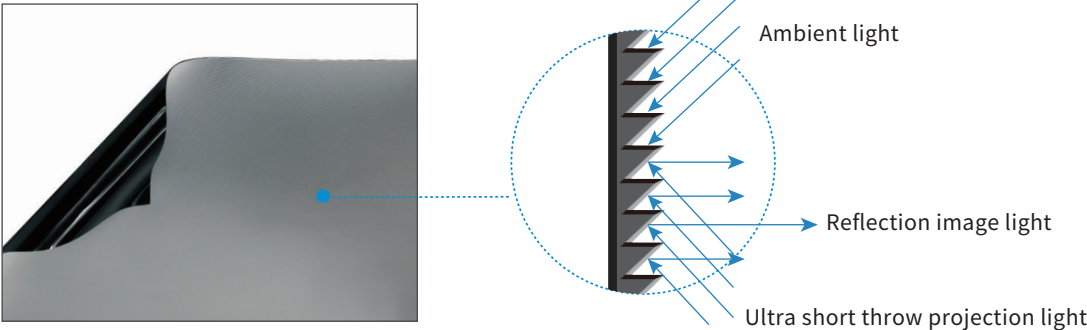
Non ambient light rejection regular throw fabric:
Use clean water with mild detergent to gently wipe the stains on the surface of the fabric (do not use corrosive detergents).
Only retract the projection screen when the fabric is completely dry.

V.Electrical parameters

Voltages & Frequencies: 110V/60Hz or 220V/50Hz
(Actual voltage shall be subject to the electrical label shown on the product)
Wireless remote control (F): Voltage 3V, using battery CR2032X2, transmitting frequency; 868MHz, effective control distance is about 15 meters.

Troubleshooting

①Black grid fabric surface is carved with optical grating tooth, enabling the targeted reflection for ultra short throw projector light beam and forming the viewing image. Projection theory as below picture shown: Screen adsorbs only the ambient light from the top but resistance to ambient light from horizontal side will be weaken,please pay attention to the light beam direction when applied.



②The screen adpots the splicing process,and the splicing line has a certain curvature due to the source of upper and lower tension,which does not affect the actual projected picture.which is a normal phenomenon.
③Fabric surface flatness: Lower black drop perfect range:250-350mm

Guangzhou Grandview Creative Technology Co., Ltd

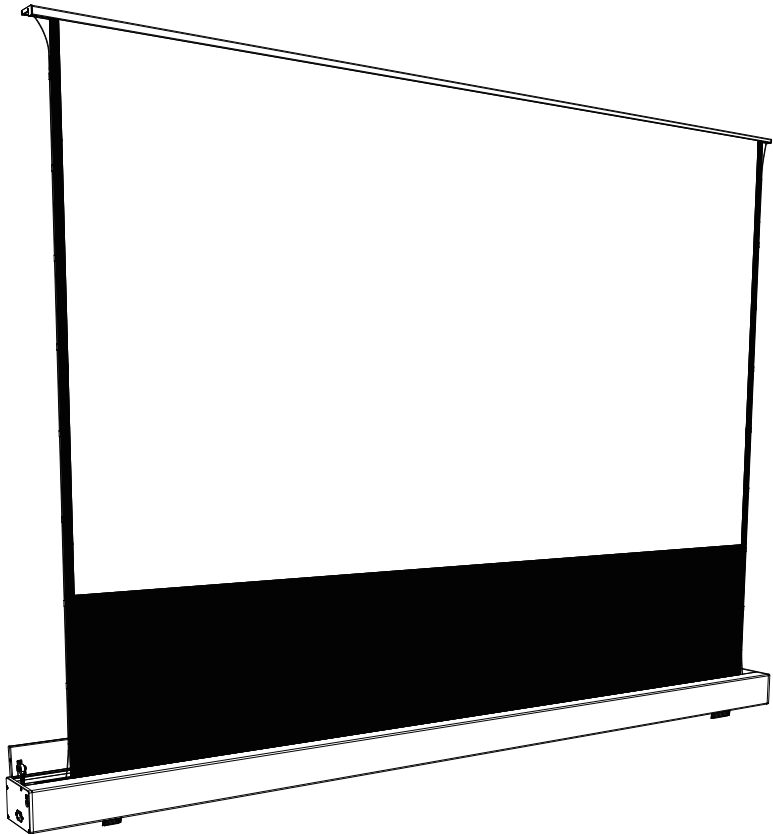
Add: No.1 Building of No.43 South International Trade Avenue, HualongTown,
Panyu District, Guangzhou China.
Tel: +8620-8489-9499 Fax: +8620-8480-5299
Web: www.grandviewscreen.com



Grandview

Motorized Tabletop Screen Installation Manual

Model: FC-FHP-MFxxx

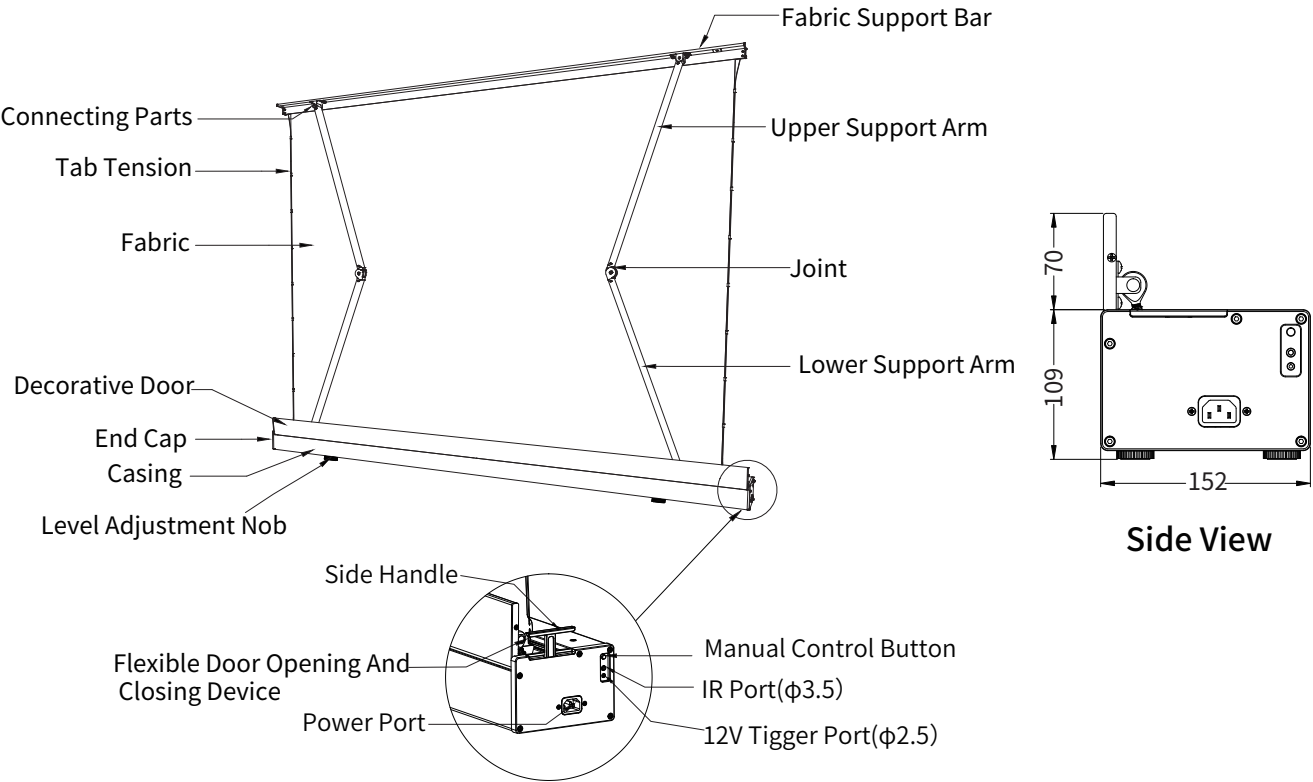


Caution

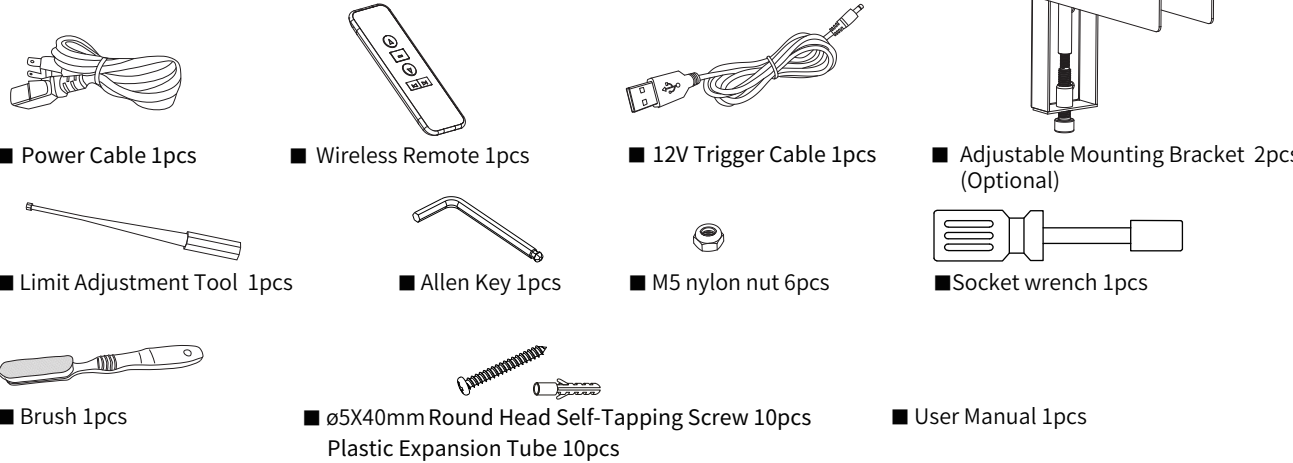
- Please tear out all the blue tape from the trap door before powering on.
- Please do not reach into the casing gap to prevent hands injury when the screen goes up.
- Please put the screen in place with no wind to prevent it from falling over.
- Please Do not disassemble or replace the original spare parts at will.

Thank you for choosing Grandview products. Please read the manual carefully before installation and use.

Screen structure diagram



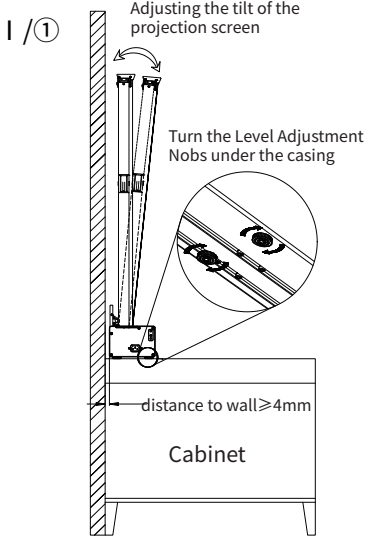
Accessories



I .Screen Installation Guidelines

① Scenario 1
Lay the projection screen flat on the cabinet: leave at least 4mm of room from the wall for the decorative door’ s operation. Fully extend the projection screen using the remote, adjust the tilt of the projection screen using the Level Adjustment Nobs under the casing.
Caution: Projection screen might tip over if there is too much tilt.

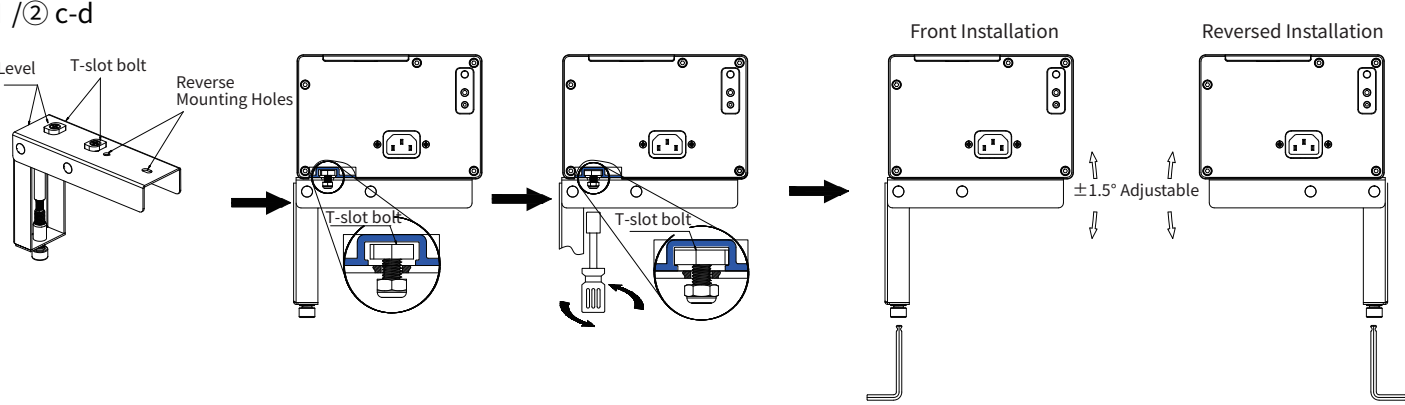
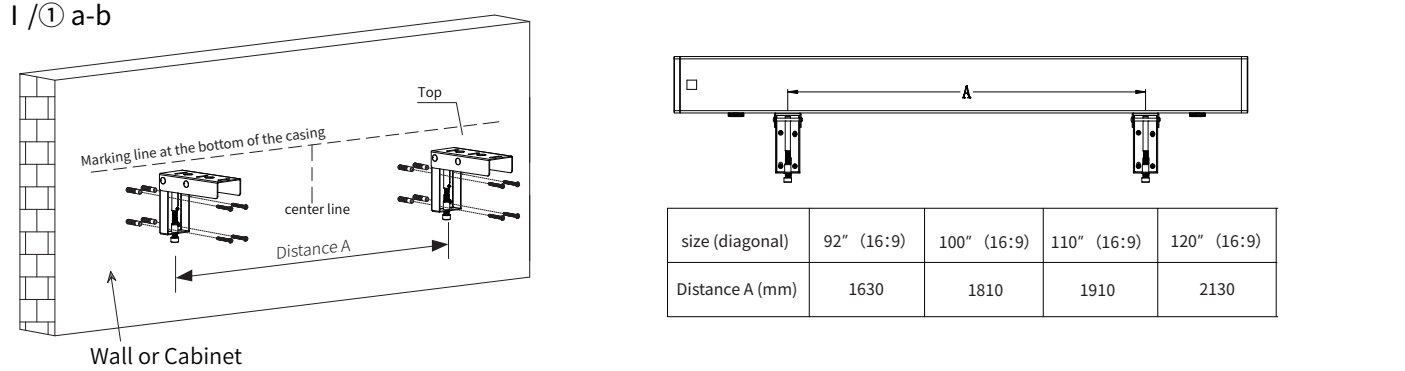
② Scenario 2
a.Measure the total length of the casing, measure the height where the bottom of the projection screen will be placed, and mark it on the wall. See value “A” on the table for the recommended distance between the two Adjustable Brackets. Line up the top of the Adjustable Bracket with the bottom of the projection screen (mark that was made on the wall).



b.Drill the 4 holes for each bracket on the wall, install an Expansion Fixture in each hole. Place the Adjustable Brackets against the wall lining up with the Expansion Fixtures and tighten usingφ5*40 Tapping Screws.

c.Adjust the T-slot bolt on the Adjustable Bracket so that they are parallel with the wall (see diagram), place the projection screen on the Adjustable Brackets, adjust the projection screen horizontally to the desire position, tighten the T-slot bolt from under the Adjustable Brackets to lock in place. (T-slot bolt are installed for front installation in default, user can install the T-slot bolt to the Reverse Mounting Holes when needed for reversed installation)

d.Connect to power, fully extend projection screen; observe for tilt, adjust tilt using the Allen Key to desire position to finish installation.



II .Functions and Instructions

This product has three control methods
a.Manual Control Button
b.12V Tigger Control
c.RF Remote Control

a.Manual Control
The Manual Control Button is located on the power port side of the casing. Pressing the button will command the screen to extend, pressing the button will command the screen to stop, then again to retract, then stop in sequence.

b.12V Tigger Control
Connect the 12V Tigger Port and the 12V port with a 12V trigger cable; the projection screen is then synchronized with the projector (when the projector is powered on, the screen will automatically extend to set position; when the projector is powered off, the screen will retract).

c. RF Remote Control

- Press the Up button, Decorative door opens, screen extends to set position.
- Press the Stop button, screen will pause.
- Press the Down button, the screen will retract and Decorative door closes.
- Press the Jog Up button or the Jog Down button to extend or retract the screen (usually used when setting extension or retraction limit).

