

FANTASY SERIES

MOTORIZED TABLETOP SCREEN (FHP)

Optical Physics
Anti-Light

4K Ultra Clear
Image Quality

120 Inches
Huge Picture



Physical Anti-Light

Ambient light resist during the day

Ultra Short Throw

Optimized for UST projector

Diffuse Reflection Imaging

Care for the eye

Multiple control

RF/IR/12V trigger/button control

Support 4K Images

Micron-scale light grid structure

Large Projection Screen

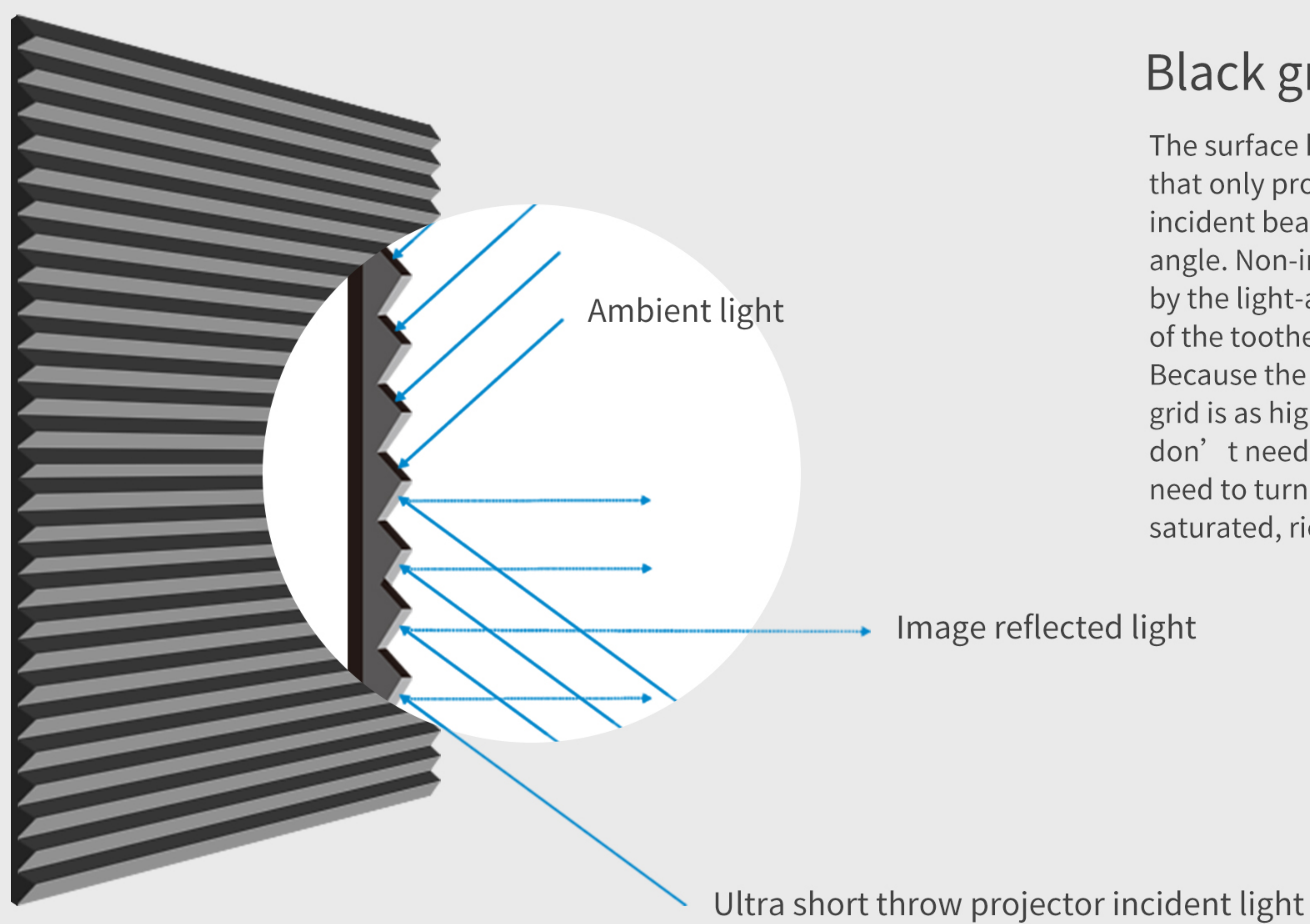
Support 100/120 inches projection maximum

140 Wide Viewing Angle

Panoramic view

Handle design

Hidden handle



Black grid anti-light principle

The surface has a finely engraved toothed grid that only provides targeted reflection of the incident beam of the projector at a specific angle. Non-imaged ambient light is absorbed by the light-absorbing coating on the other side of the toothed grid and no diffraction occurs. Because the color reproduction of the black grid is as high as 99%, Even during the day, you don't need to close the curtains, you don't need to turn off the lights, you can still have a saturated, richly-lit projection screen.



Black grid screen and Matt white screen comparison

The special micron-scale grid structure on the surface of the black grid screen blocks the upper interference light source, and the light source of the ultra-short-throw projector below is reflected in parallel, and the image quality is clearer and brighter. The ordinary Matt white screen is made of ordinary PVC material, which is rough in workmanship and only works better than white wall.



Fine picture quality



Bright picture



Support 4K projection



Clear contrast

Indoor glare light environment during the day



Grandview ALR screen and other brands ALR screen comparison

Use Grandview black grid ALR screen can reduce the influence of ambient light and effectively improve brightness and contrast. The picture performance is clearer and brighter. Other brands ALR screen have poor light resistance, and color saturation reduces the viewing effect.



Grandview black grid ALR screen



Other brands ALR screen



Diffuse reflection imaging, more confidence in watching

The black grid ALR screen only targets the incident beam of the projector at a specific angle. No matter in the day or glare light, it can display a saturated color and full-scale projection picture.

Diffuse reflection imaging principle

LED screen, Self-luminous direct into eyes



Diffuse reflection imaging

140° wide viewing angle

120-inch large screen is more than 140° of viewing angle, complete coverage of the home theatre viewing area, the screen is outstanding, with the use of laser ultra-short-throw projector, can achieve the giant screen laser TV effect.



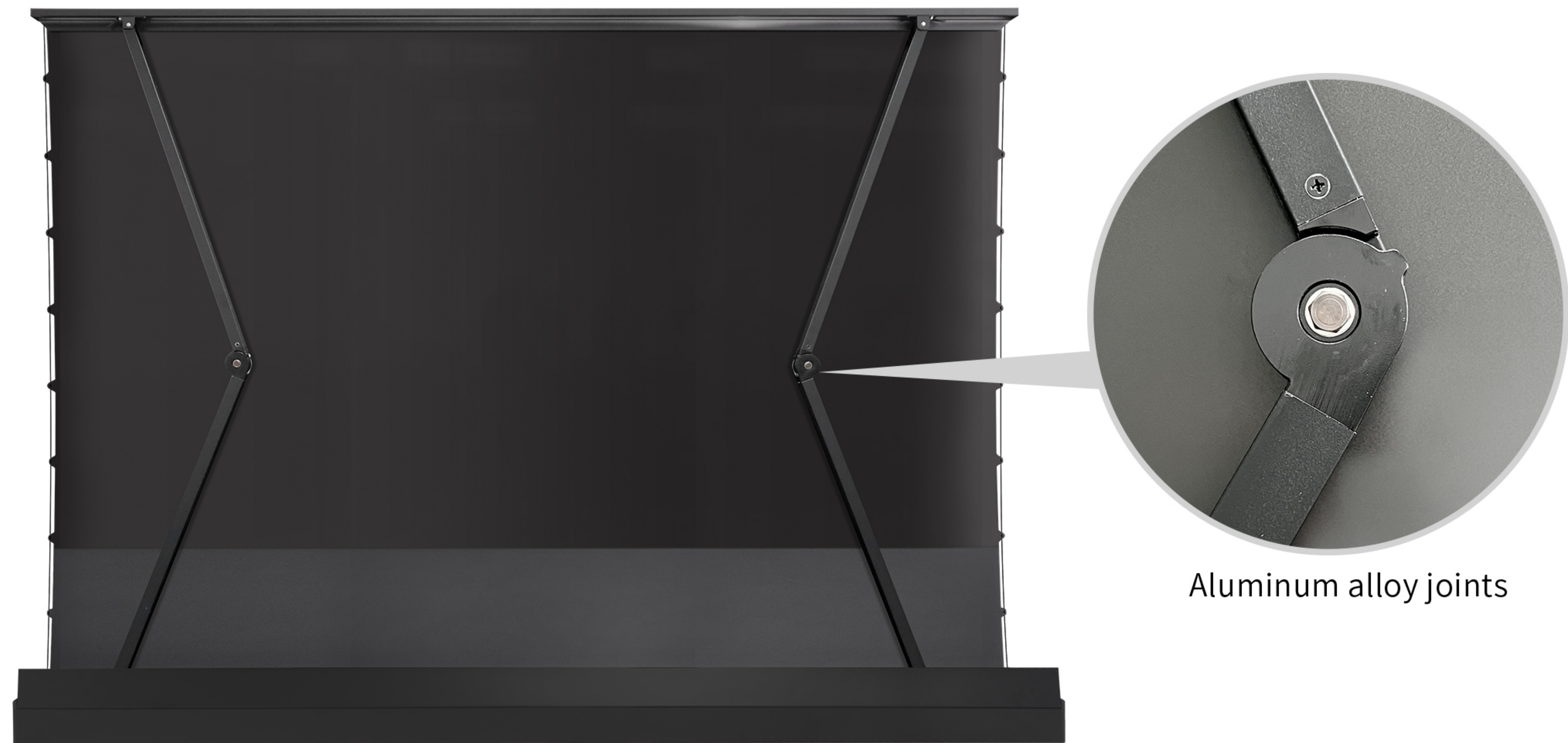
Actual environment



FRONT



BACK



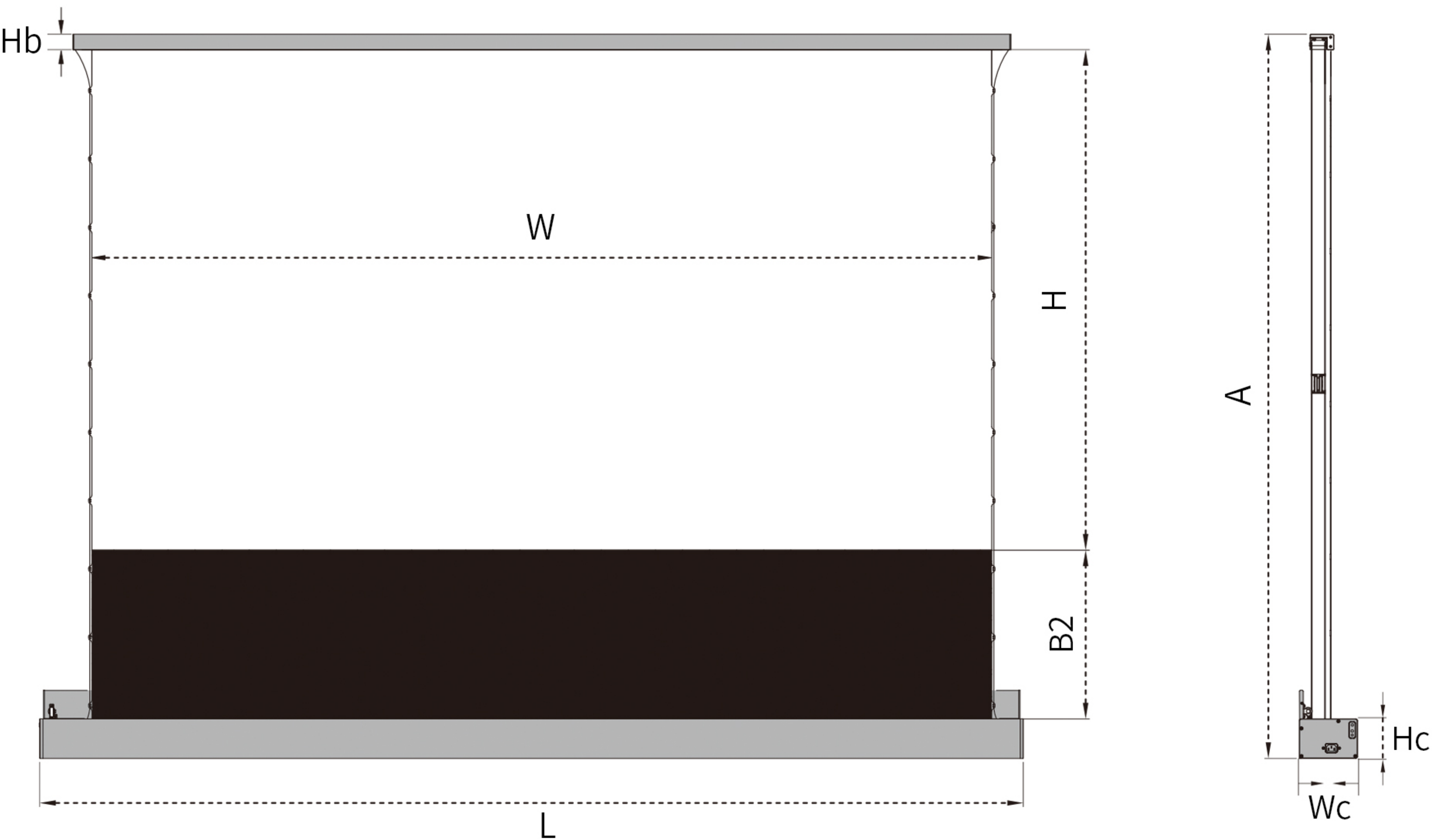
Hidden handle

Two people can easily move the screen



Product parameters

FABRIC: DY3	Projector type: UST projector
Projection diagonal: 92" /100"/110"/120" 16:9	Viewing area: 2037×1146mm/2214x1245mm/ 2435×1370mm/ 2657x1494mm
Color reproduction: 99%	Application: family living room, small office
Viewing Angle: 140 degree	Casing Color: White/Black
Gain: 0.4	Control: RF/IR/12V Trigger/Button control



Grandview black grid ALR size				
Size	92"	100 "	110 "	120 "
Aspect Ratio	16 : 9	16 : 9	16 : 9	16 : 9
Viewing height	H=1146mm	H=1245mm	H=1370mm	H=1494mm
Viewing width	W=2037mm	W=2214mm	W=2435mm	W=2656mm
Screen height	A=1606mm	A=1705mm	A=1830mm	A=1954mm
Screen length	L=2274mm	L=2451mm	L=2672mm	L=2893mm
Black drop	B2=350mm	B2=350mm	B2=350mm	B2=350mm
Casing height	Hc=102mm	Hc=102mm	Hc=102mm	Hc=102mm
Casing depth	Wc=152mm	Wc=152mm	Wc=152mm	Wc=152mm
Upper bar height	Hb=8mm	Hb=8mm	Hb=8mm	Hb=8mm

*Fabric option: DY3.DY5.WW5.UHD130

