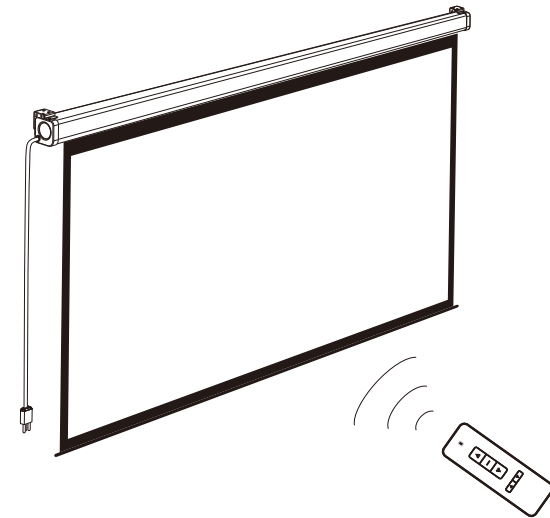


Grandview®

Instruction Manual for CNV series Motorized Screen with IR Remote Control

Grandview®



Model: CN-MRxx

Grandview Crystal Screen Canada Ltd.

#11- 3751 North Fraser Way,
Marine Way Business Centre,
Burnaby, BC, Canada V5J 5G4
Tel: 1-604-412-9777 Fax: 1-604-412-9796
Website: www.grandviewscreen.ca

Guangzhou Grandview Crystal Screen Co., Ltd.

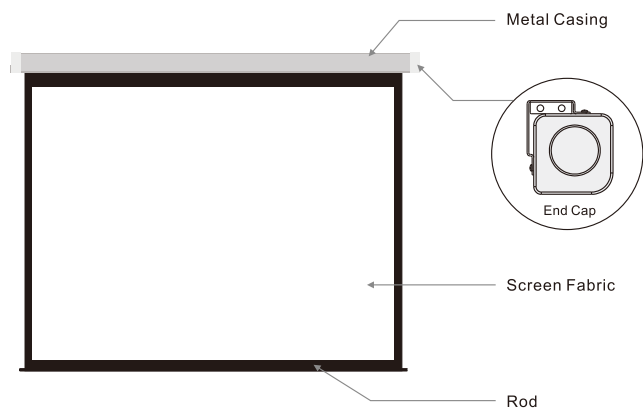
No.43, Guomao Road South, Hualong Town,
Panyu District, Guangzhou City, China
Tel: +8620-8489-9499 Fax: +8620-8480-3343
Website: www.grandviewscreen.com
www.grandviewscreen.com.cn



Thank you for purchasing a Grandview projection screen.

Before use, please read instructions carefully. After installation, store instructions for future reference.

Description



Accessories

■ $\phi 5$ x 40mm Screw (8pcs)



■ External IR Receiver (1pc)



■ $\phi 5$ mm Allen Key (1pc)



■ Installation Manual (1pc)

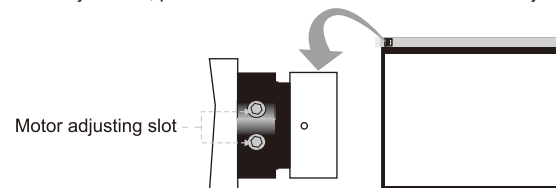
Motorized Screen Power Specifications

Voltage	Frequency	Watts	Application
230V/120V/100V	50Hz/60Hz	36W/36W	Applies up to 120" motorized screens

Instructions

Attention:

- > Please make sure there is no dust or dirt on the fabric surface before rolling it back to the casing
- > The recommended working time is less than 50 seconds. The motor will enter overheating protection status and stop working for every continuous 4 minutes operation, user would need to wait for a while until the motor cool down before operating again.
- > There is no lube needed for the motor. Please be noticed that the appropriate setting is optimized which requires no further adjustment, please consult the after sales team before adjusting the limits.



Warnings

- 1.The ceiling or wall used for fixture installation must be secure to prevent the screens from falling.
- 2.While installing electrical motors, please hire professionals or your local dealer to ensure safety.A misconnection may lead to fire or leaks.
- 3.Keep all infrared wireless products away from fluorescent lighting as it may cause malfunctions.
- 4.Please read the following as any damage to the screen surface will affect the quality of the picture:
 - a.Avoid contact or touching the screen surface as it may cause scratches or tears.
 - b.Do not write or draw on the surface
 - c.Clean the screen with a soft cloth and lukewarm water. Do not use any detergent or cleaning products.
- 5.Roll up the screen after every use. Ensure that the screen is level when installing; do not pull on the sides or fold the screen.
- 6.To prevent unnecessary damage, the operating and maintenance of the screen should be done by adults.



Ignoring the safety warnings may lead to injuries and/or damaging the product.



Fixtures should be installed in a secure place to avoid accidents or the screen falling.



Do not connect any electrical attachments or remote controls.



Roll up the screen after every use . Leaving it hanging for a long period of time may cause the fabric to loosen.



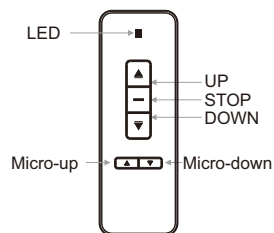
Please contact your local dealer for repairs or maintenance. Please contact our company if you have any further questions . Avoid taking apart the fixtures yourself. Loose parts may cause the screen to fall.



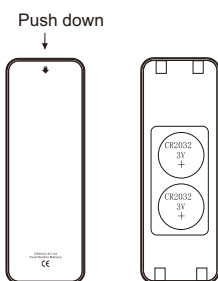
Refrain from hanging anything on the screen as it may cause the screen to fall.

Do not take apart and replace with unknown parts. If there are any problems, please contact your local dealer. Product specifications are subject to change.

Instructions



Model: AC127



Button Function and Operation Instruction :

1. Press UP button to lift the screen
2. Press STOP button to stop the screen
3. Press DOWN button to lower the screen
4. Press MICRO-UP button to retract the screen in small increments (150ms for each movement)
5. Press MICRO-DOWN button to lower the screen in small increments (150ms for each movement)

Cautions:

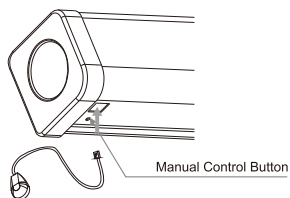
1. The minimum distance between Controller and Receiver: 50cm
2. Workable within 8m in horizontal direction from the Receiver to the Controller
3. Do not cover the Controller's launching port while operation
4. Strictly ban operation in wet or high temperature environment.
5. Replacing batteries when the signal is faint or no signal.
6. Batteries for the Controller: 2 units CR2032 button cells.

Batteries Installation Instruction:

When the signal of the Controller is faint, please replace the batteries as follow steps:

1. Reverse Controller to the back, push down as the arrow mark to open the cover.
2. Install two cells of battery and set the direction of positive and negative electrode just like the chart shows.
3. Close the battery cover.

Instructions



External infrared receiver

If you are installing your projection screen behind a valance that may block the signal from the remote control, simply install the external infrared receiver provided. Then place the receiver on the outside of the valance.

Manual Control Button

The button could control the screen manually and be effective repeatedly.

Installation

1. This projection screen should be installed at the best possible viewing position for the audience. Take out all the parts from the packaging and follow the accessories guideline to ensure you have all the parts. The parts needed will vary depending on which installation you choose to use. For installation on a wood wall or ceiling, use 5 x 40 anchors and screws.
2. There are two way for wall brackets to fix on the housing. As you can see on the figure 1, which is our normal fixed way (namely factory set). While the other fixed way is to interchange the left and right wall brackets, and then fix onto the housing (namely functional installation way, as figure 2).

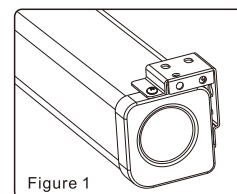


Figure 1
Factory-set installation way

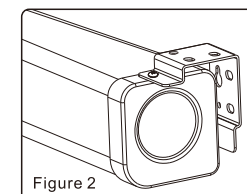
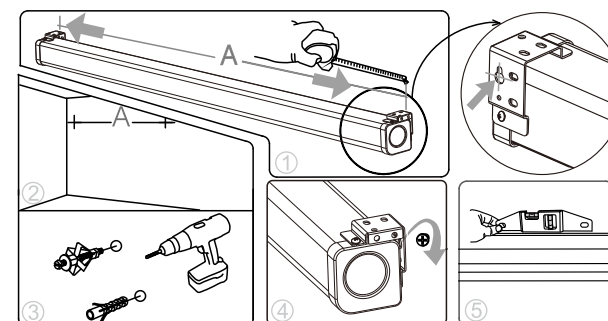


Figure 2
Functional installation way

Installation one (Factory-set installation way)

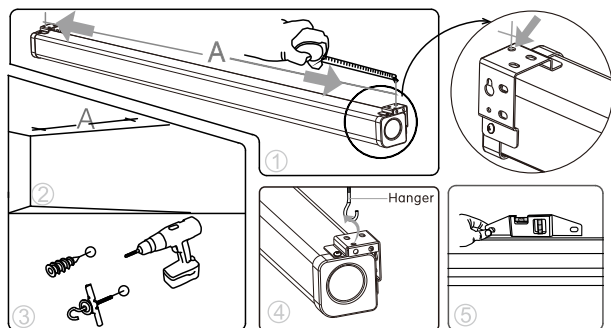
Wall Mount

Using a tape measure, measure the distance between the two keyholes on the casing (figure 1). According to the measurement, use the drill to drill identical holes of the appropriate size on the wall (use a smaller drill bit than the actual screws) and ensure that it is level (figure 2 & 3). Screw in the appropriate screws, either 5 x 40 by itself for wood walls or with anchors for drywalls, leaving enough space at the end to hang the casing (figure 4). To ensure that the screen is level, use a level to check (figure 5).



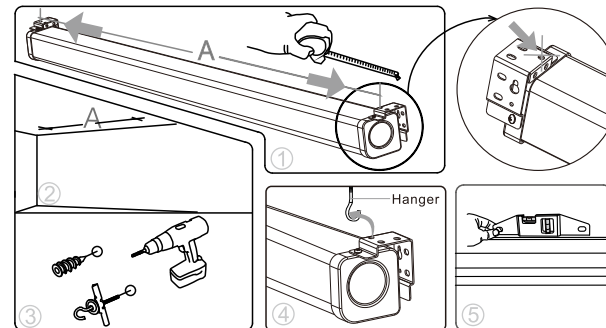
Ceiling Mount

Using a tape measure find out the distance between the two keyholes on the casing (figure 1). According to the measurement, use the drill to drill identical holes of the appropriate size on the ceiling and ensure that it is level (figure 2 & 3). Screw in the hook screws (not provided), and lift the screen into the hook screws to hang (figure 4). To ensure that the screen is level, use a level to check (figure 5).



Ceiling Mount

Using a tape measure find out the distance between the two keyholes on the casing (figure 1). According to the measurement, use the drill to drill identical holes of the appropriate size on the ceiling and ensure that it is level (figure 2 & 3). Screw in the hook screws (not provided), and lift the screen into the hook screws to hang (figure 4). To ensure that the screen is level, use a level to check (figure 5).

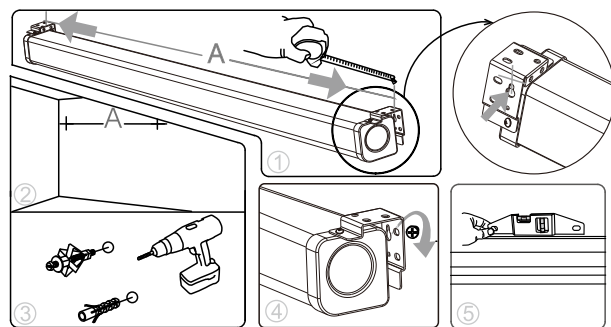


Installation two (Functional installation way)

For Functional installation way, we can not only use wall mounting, ceiling mounting to fix the housing, but also can just nail the housing onto the wall and ceiling via wall brackets using spare screws. Please make sure that, using this installation way, you have to take off the factory-set wall brackets and then interchange left & right brackets before mounting.

Wall Mount

Using a tape measure, measure the distance between the two keyholes on the casing (figure 1). According to the measurement, use the drill to drill identical holes of the appropriate size on the wall (use a smaller drill bit than the actual screws) and ensure that it is level (figure 2 & 3). Screw in the appropriate screws, either 5 x 40 by itself for wood walls or with anchors for drywalls, leaving enough space at the end to hang the casing (figure 4). To ensure that the screen is level, use a level to check (figure 5).



Wall/Ceiling Mounting Installation

