

# Grandview<sup>®</sup>

## Installation Guide for Large-Flat series Prestige Concave Permanent Cinema Screen

Grandview<sup>®</sup>



Model: LF-PHxx

### Guangzhou Grandview Creative Technology Co., Ltd

Add: No.1 Building of No.43 South International Trade Avenue, HualongTown,  
Panyu District, Guangzhou China.

Tel: +8620-8489-9499 Fax: +8620-8480-5299

Web: [www.grandviewscreen.com](http://www.grandviewscreen.com)

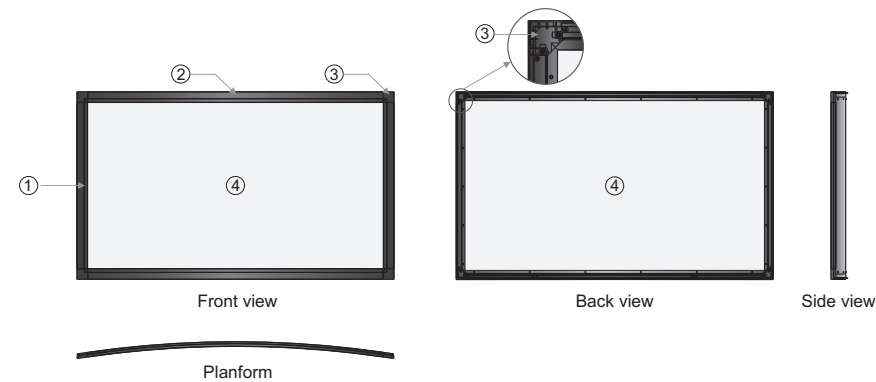


Thank you for purchasing a Grandview projection screen.

Before use, please read instructions carefully. After installation, store instructions for future reference.

Description

Illustration



Screen parts

①	Side frame	③	Connector piece
②	concave frame	④	Fabric

Accessories

- Concave frame bars ( 2pcs )
- Side frame bars ( 2pcs )
- $\varnothing 6$  mm horizontal tention bar ( 2pcs )
- $\varnothing 6$  mm vertical tention bar ( 2pcs )
- Instruction manual ( 1pc )
- M8 x 30 mm corner connector screws ( 4pcs )
- Top and bottom installation bars( 1set )
- $\varnothing 5 \times 40$  mm tapping screw with anchor ( 6sets )
- $\varnothing 5 \times 10$  mm screws ( 8pcs )
- Security screw ( 2pcs )
- Bracket ( 4pcs )
- Fixing lug ( see table 1 )
- M8 spanner ( 1pc )

## Warning

- When installing, make sure it is facing forward. The back of the screen will be labeled with a sticker.
- Please read the following as any damage to the screen surface will affect the quality of the picture:
  - 1.The frame is made with lightweight aluminum. Please handle with care.
  - 2.Avoid contact or touching the screen surface as it may cause scratches or tears.
  - 3.Do not write or draw on the surface.
  - 4.Clean the screen with a soft cloth and lukewarm water. Do not use any detergent or cleaning products.
  - 5.Use a cotton cloth to carefully wipe off the dust on the frame to prevent any damages
  - 6.If it is not in use for a long period of time, cover the screen to shut out dust and dirt.
- To prevent unnecessary damage, the operating and maintenance of the screen should be done by adults.

Opening the case, the frame has indentations on surface because of packaging in a dry case for a long time. This is a normal phenomenon and the screen can be used normally. Please stay the screen in a normal condition that the indentations can be naturally removed. Recovery time will be changed in 1-15 days because of the air humidity, If you want to remove these indentations quickly, please use half-wet solution.

Methods: Sprinkle water on the surface that can remove the indentations.



Ignoring the safety warnings may lead to injuries and/or damaging the product.



Fixtures should be installed in a secure place to avoid accidents or the screen falling.



Please contact your local dealer for repairs or maintenance. Please contact our company if you have any further questions. Avoid taking apart the fixtures yourself. Loose parts may cause the screen to fall.

Do not take apart and replace with unknown parts. If there are any problems, please contact your local dealer. Product specifications are subject to change.

## Installation

Take out all the parts from the packaging and follow the accessories guideline to ensure you have all parts, then install the screen as below.

### Frame assembling

1. Put the fixing lugs into the slots of top and bottom bars, taking the following table as reference. ( Figure 1 - 2 )

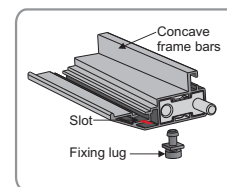


Figure 1

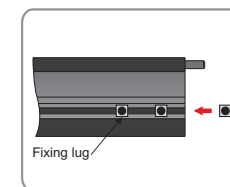


Figure 2

Table 1: quantity of fixing lugs

Format	Model	Top & bottom concave bars (pcs)	Left & right side bars (pcs)	spare lugs (pcs)	Total (pcs)
4:3	LF-PH60	5 X 2 = 10	4 X 2 = 8	2	20
	LF-PH72	5 X 2 = 10	4 X 2 = 8	2	20
	LF-PH80	6 X 2 = 12	5 X 2 = 10	2	24
	LF-PH100	7 X 2 = 14	5 X 2 = 10	2	26
	LF-PH120	8 X 2 = 16	6 X 2 = 12	2	30
	LF-PH150	10 X 2 = 20	8 X 2 = 16	2	38
16:9	LF-PH77	6 X 2 = 12	4 X 2 = 8	2	22
	LF-PH80	6 X 2 = 12	4 X 2 = 8	2	22
	LF-PH92	7 X 2 = 14	4 X 2 = 8	2	24
	LF-PH100	8 X 2 = 16	5 X 2 = 10	2	28
	LF-PH106	8 X 2 = 16	5 X 2 = 10	2	28
	LF-PH112	8 X 2 = 16	5 X 2 = 10	2	28
	LF-PH120	9 X 2 = 18	5 X 2 = 10	2	30
	LF-PH150	11 X 2 = 22	7 X 2 = 14	2	38

Note: Sizes and specifications are subject to change at any time. Refer to real product for exact data.

2. Lay the two side bars and two concave bars on a horizontal ground, building the shape of a rectangle. ( Figure 3 )

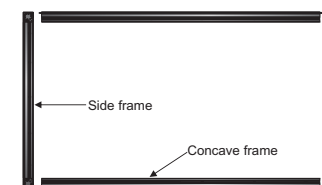
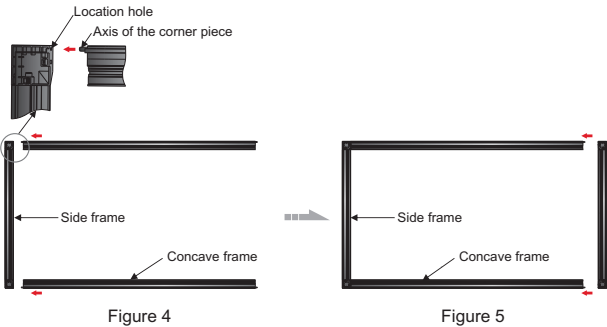
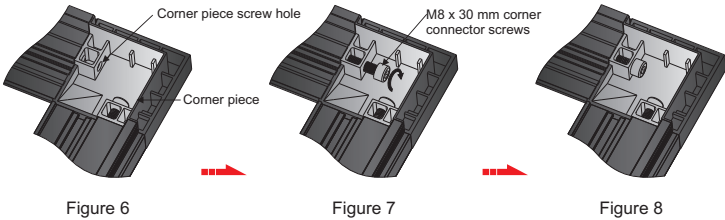


Figure 3

3. Conect the axis of the corner piece of the concave frame bar to the side bar's location hole. ( Figure 4 - 5 )

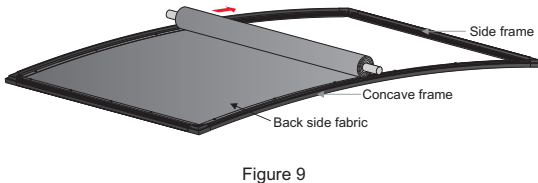


4. Fasten the M 8 x 30 mm corner connector screws to the corner connector screw holes. ( Figure 6 - 8 ). Do the same for the rest three corner pieces.



Fabric installation

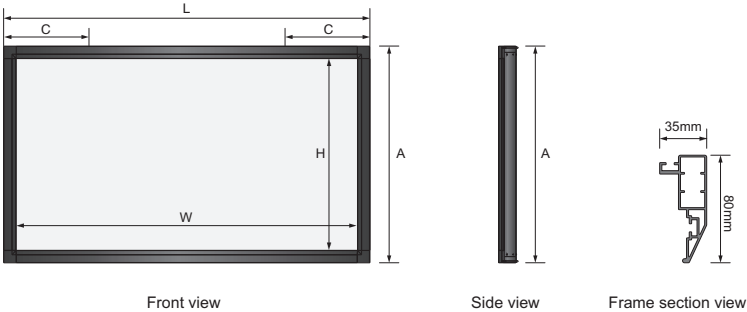
1. Put the whole frame upside down and then unwrap the fabric. ( Avoid scraping the fabric when unwrapping ). ( Figure 9 )



Specifications

Format	Model	Specification (In)	Viewing area		Screen dimension		Bracket margin C (mm)	Net weight (kg)
			W (mm)	H (mm)	L (mm)	A (mm)		
4:3	LF-PH60	60"	1219	914	1381	1076	360	7.3
	LF-PH72	72"	1463	1097	1625	1259	480	8.8
	LF-PH80	80"	1626	1219	1788	1381	490	9.5
	LF-PH100	100"	2032	1524	2194	1686	620	12.2
	LF-PH120	120"	2438	1829	2600	1991	730	13.2
16:9	LF-PH150	150"	3048	2286	3210	2448	900	18.5
	LF-PH77	77"	1704	958	1868	1120	490	9.4
	LF-PH80	80"	1771	996	1935	1158	523	9.8
	LF-PH92	92"	2037	1145	2201	1307	581	11.3
	LF-PH100	100"	2214	1245	2378	1407	670	12.2
	LF-PH106	106"	2346	1319	2510	1481	660	12.7
	LF-PH112	112"	2479	1394	2643	1556	727	13.5
	LF-PH120	120"	2656	1494	2820	1656	740	14.2
	LF-PH150	150"	3320	1867	3484	2029	922	17.8

Note: Sizes and specifications are subject to change at any time. Refer to real product for exact data. The tolerance for L is  $\pm 5$ mm.



Installation details:

- a. Woody wall installation: Follow the screen installation step 3 and fix the  $\phi 5 \times 40$  mm tapping screws to the holes in the top and down installation bars, three screws on each bar. ( Figure 25 )
- b. Concrete wall installation: Follow the screen installation step 3 and drill six proper holes through the concrete wall with electrical drill, and then nail the screw anchors into the done holes on the wall. Fix the  $\phi 5 \times 40$  mm tapping screws to the holes on the wall through the holes in the top and bottom installation bars, three sets of screws on each bar. ( Figure 26 )

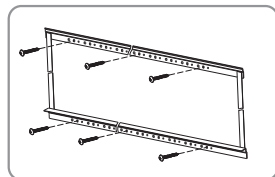


Figure 25

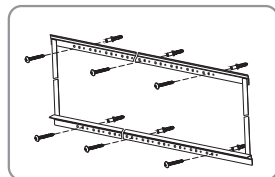


Figure 26

4. Fasten the concave bar brackets to the on-wall top and down installation bar slots. ( Figure 27 - 28 )

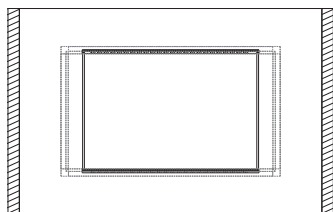


Figure 27

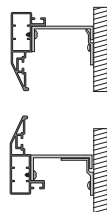


Figure 28

5. When the screen is installed on the installation bars, adjust the orientation of the screen to make sure the hole in the bracket is aimed at the fixed slot in the bottom installation bar. Fasten the security screw to the hole and fix the screen. ( Figure 29 - 30 )

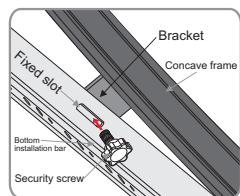


Figure 29

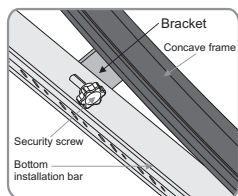


Figure 30

2. Put the tension bars to the four slots of fabric. That is a step suggested to be completed by two persons, one to hold the fabric and another to pull through the tension bars. ( Figure 10 - 12 )

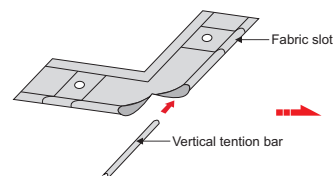


Figure 10

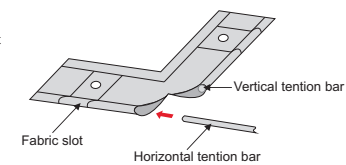


Figure 11

3. Align the fixing lugs as arrows indicate. ( Figure 12 )

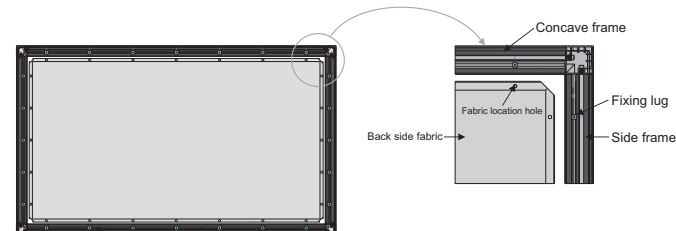


Figure 12

4. Slightly pull the fabric eyelet over the fixing lugs with each hand on each side of the fabric location hole. Make sure the fabric hole is fully fixed by the fixing lug. (Figure 13 - 15)

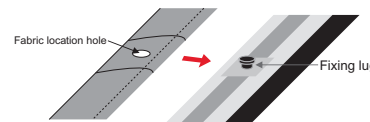


Figure 13

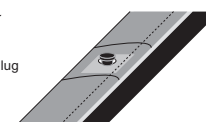


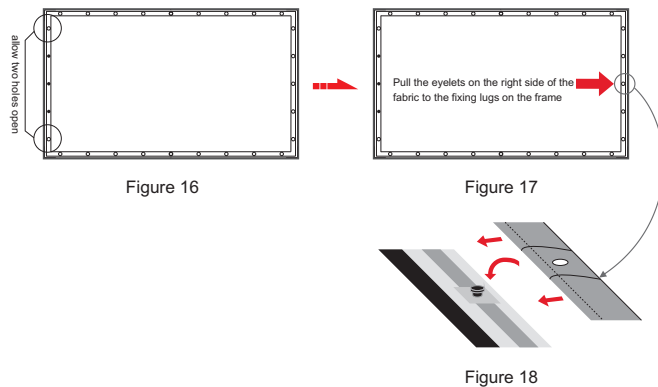
Figure 14



Figure 15

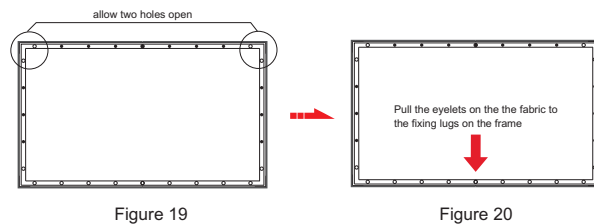
5. When pulling the eyelets on the left side of the fabric to the bracket on the frame, allow the two holes at the very ends open. Let the middle hole be filled first. Then do the same for the middle holes of the right side of fabric.

( Figure 16 -18 )



6. Follow step 5 to do the same for the top and bottom sides of fabric. Allow the two holes at the very ends open.

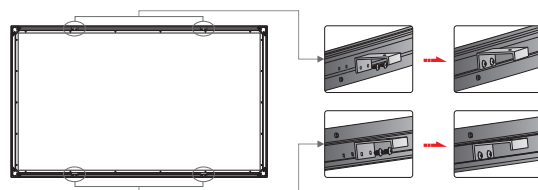
( Figure 19 - 20 )



7. Make sure the fabric is in a flat situation without wrinkles before pulling the four holes of the corners into the into the brackets.

#### Screen Installation

1. Each screen is equipped with 4 brackets labelled 1,2,3,4; and thus the concave frame has relevant marks of 1, 2, 3, 4. When installing the brackets, use the  $\phi 5 \times 10\text{mm}$  screws to fix the bracket 1\* to mark 1\* on the concave frame. Do the same for bracket 2\*, 3\* and 4\*. ( Figure 21 ). Make sure the screws are tightly fastened.



2. Each screen is equipped with a top and bottom installation bars with many sets of holes, three of which belonging to one set. Installation bar specifications on Figure 22.

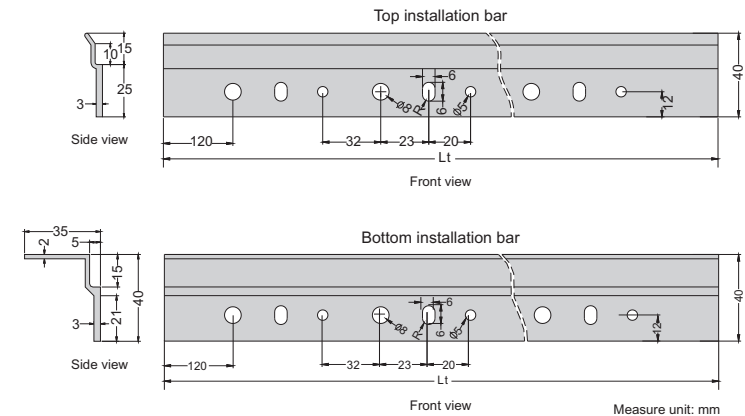


Table2: Length of installation bars ( Lt )

Format	Specification (in)	60"	72"	77"	80"	92"	100"	106"	112"	120"	150"
4:3	Lt (mm)	850	850	/	1000	/	1150	/	/	1300	1600
16:9	Lt (mm)	/	/	1000	1000	1150	1150	1300	1300	1450	1750

Note: Sizes and specifications are subject to change at any time. Refer to real product for exact data.

3. The top and bottom installation bars have been linked in factory and the length in between is pre-set. Fix the top installation bar at horizontal level and the bottom bar will go parallel as a result of gravity. Make sure the length in between is conform to the table 2 .Micro adjustment is allowed. Then fix the bottom installation bar. You can also refer to table 3 for the required distance between the installation bars. ( Figure 23 - 24 )

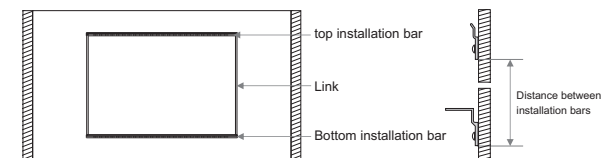


Table 3: Distance between installation bars

Format	Specification (in)	60"	72"	77"	80"	92"	100"	106"	112"	120"	150"
4:3	Distance (mm)	1019	1202	/	1324	/	1629	/	/	1934	2391
16:9	Distance (mm)	/	/	1063	1101	1250	1350	1424	1499	1599	1972

Note: Sizes and specifications are subject to change at any time. Refer to real product for exact data.