

Motorized screen (M) manual control method:

- In-line switch (Figure 1)
- Lower (Figure 2): switch to “=”, screen will automatically lower down to desire limit position.
- Retract (Figure 3): switch to “-”, screen will automatically retract to setting limit position.
- Stop: switch to “●”, screen will stop immediately.



Figure 1

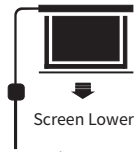


Figure 2

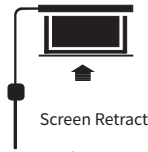
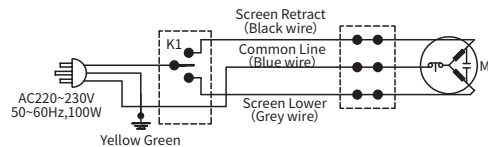


Figure 3

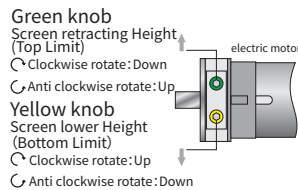
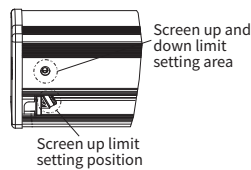
Motorized screen (M) circuit diagram:



Screen Limit setting:

- The screen is fitted with 2 limits. The limits automatically stop the screen in the fully Up (Top limit) and fully Down (bottom limit) positions. You can adjust the bottom limit to set your desired viewing height.

Note: When screen retract height over the setting limit, fabric will automatically lower down. For this case, please press stop switch (By manual or RF control), micro adjust on green knob in clockwise direction is fine.



Caution:

Please operate carefully and slowly, it might cause motor and screen damage. When over retracting. When setting lower limit, please setting within 10cm. If over setting, it might cause fabric break and fall.

Screen Voltage data: AC220-230V/50-60HZ, current 0.5A, power 100W.

RF remote (F): Voltage 3V, use CR2032*2 battery;

Ratio Frequency: 868MHz.

IR remote : Voltage 3V, use CR2032 battery

Grandview

Protecting your screen:

To ensure long lasting viewing enjoyment keep the screen rolled up when not in use. Check both the front and back surfaces before retracting into the case to make sure it is free of dust, dirt, insects or other foreign matter. Use a soft brush or cloth to lightly remove any foreign particles.

Cleaning your screen:

Use warm water with a mild detergent to remove any marks on the surface or screen casing (only dab, do not rub). Immediately dry the screen with a soft cloth or towel. Do not leave it to air dry.

Never use any solvents, chemicals or abrasive cleaners on the screen surface as they can permanently damage the screen surface.

Grandview



FANCY SERIES TAB-TENSION SCREEN
INTELLIGENT MOTORIZED SCREEN

Model:

FC-M

FC-MI

FC-MF

Guangzhou Grandview Creative Technology Co., Ltd

Add: No. 1 Building of No. 43 South International Trade Avenue, HualongTOWN,

Panyu District, Guangzhou China.

Tel: +8620-8489-9499 Fax: +8620-8480-5299

Web: www.grandviewscreen.com

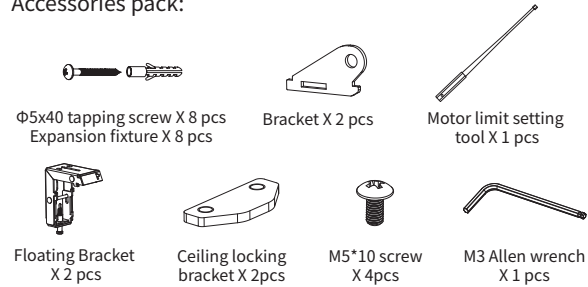


Dear Customers:

Thank you for the purchasing of Grandview Fancy series screen. Before your normal usage of product, please read the specification first, and keep it well for future reference.

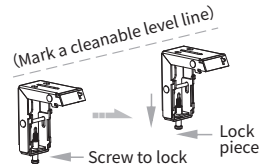
Preparation for installation

Accessories pack:

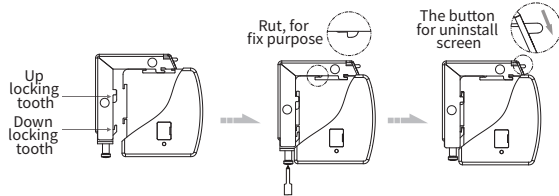


Wall/Ceiling installation method:

- Install bracket onto wall/ceiling that can bear such weight, and keep screen two sides on a same level. (Distance from casing end with 10cm), as below figure:



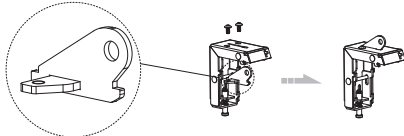
- Hold the casing two ends flatly onto the bracket then push into the bracket, when the locking tooth fixed, you will hear a locking sound that means screen already fixed onto bracket safely. Lock screw and fix screen. As figure:



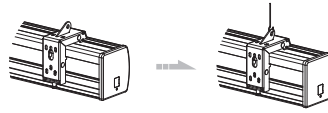
Note: When taking off screen, loosen the bottom screw first and push the top loosen button, then you can easily take the screen off, as above figure:

Ceiling hanging method

- Let ceiling locking bracket go through bracket, use hanging bracket lock into the rut and it has a hanging hole there, as figure:

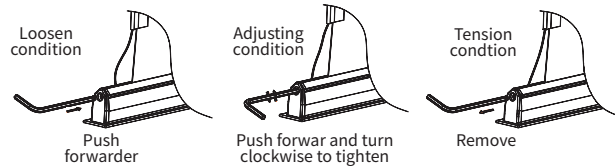


- Take reference same as wall/ceiling installation, measure installation distance and mark position, the fix screen casing steady with bracket.
- According to site installation height, install hook onto ceiling, then hang the screen through bracket hole. As figure:



The adjustment of screen tension thread

- Hold the under bar, using the M3 Allen wrench insert into the hexagonal hold push forward a little, slightly turning and adjust to desire tension (Clockwise turning to tighten, opposite means to loosen), then remove adjustment key to finish adjustment.



Warning: Before operate screen, make sure the sticker on casing and under bar is removed.

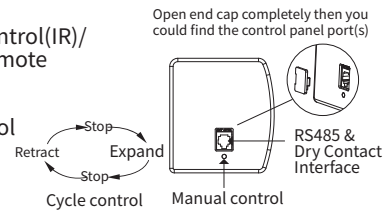
Importance

- Please make sure the installation position (ceiling or wall) or hang device can suffer from at least 25KG, otherwise it may cause danger.
- The product is using single-phase AC power, please use a socket with earth wire and make sure the earth wire is well connected.
- For in-line switch motorized screen, if necessary equip with extra high voltage control, please must operate by a professional engineer, and make sure central control between screen retract and screen expand has timing delay device. (0.2 second at least)

Control Option

Intelligent motorized screen has 4 control options:

- A. Manual Control
- B. Infrared Remote Control (IR)/ Radio frequency Remote Control (RF)
- C. Dry Contact Control
- D. RS485 / RS232 Control

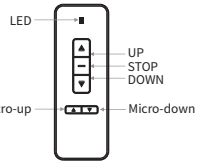


A. Manual Control:

The button is on the left side of casing (Close to RS485 & Dry Contact interface), this is a cycle control button.

B.-MI for IR: AC127/ -MF for RF: AC123

- UP : screen UP
- STOP: screen STOP
- DOWN: screen DOWN
- Micro-up: retract the screen in small increment
- Micro-down: lower the screen in small increment
- IR: transfer signal by IR (Wavelength: 940Nm)
- RF: Pre-set in factory; transfer signal by Radio wave (868MHz).



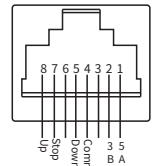
Programming code setting:
Screen connects to power within 10 seconds (in programming mode), Press the UP & STOP buttons together on the remote. Pairing completed.

Programming code Clearing:
Screen connect to power within 10 seconds (in programming mode), Press the UP & STOP button together on the remote. Clearing completed.

C. Dry contact Control (Wiring instruction)

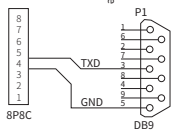
Connect via RJ45 input
Line 4, 5, 7, 8 are control lines:

Line No.	4	5	7	8
Function	Common line	Screen down	Stop	Screen up



D. RS232/485 Input setting (Wiring instruction)

Connect via RJ45 input (8P8C type),
Line 1 & line 2 are count line (For RS485 connection), 1D-, 2D+, RS232 wiring instruction (see the right wiring map).

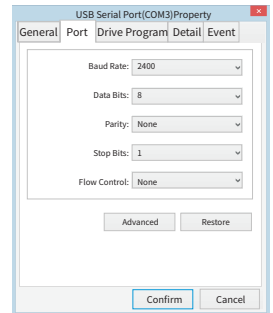


RS485/RS232 Input settings/Close Contact

- Baud Rate: 2400
- Data Bits: 8 bits
- Parity check: None
- Stop Bits: 1 bits

HEX Control Code:

- Screen Up: FF EE EE EE DD
- Screen Stop: FF EE EE EE CC
- Screen Down: FF EE EE EE EE
- Address code: FF EE EE EE AA (Some third party device may require this command)



Important Notes:

- When RS232/RS485 connecting fail, please exchange wiring line.
- Loop Resistance $\leq 20\Omega$.
- Don't wiring in parallel with strong interaction source.