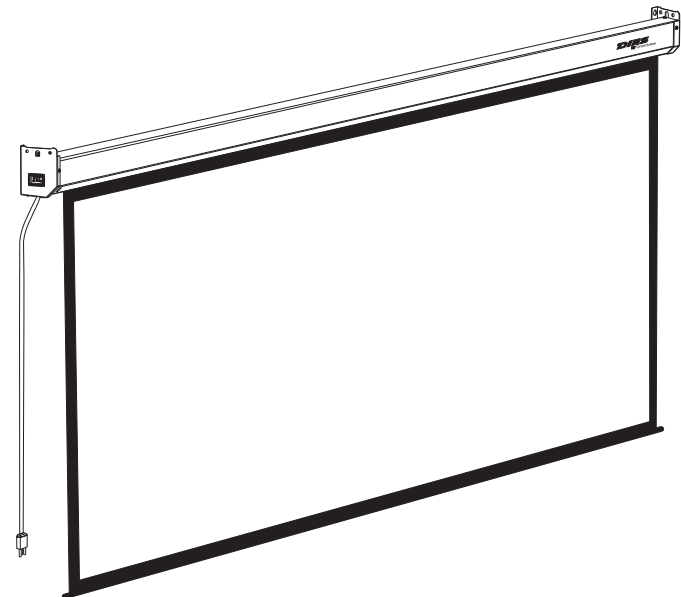


Grandview[®]

Instruction Manual for Dias Motorized Intellectualized-Controlled Screen

Grandview[®]



Model: DI-Mlxx

Thank you for purchasing a Grandview projection screen.

Before use, please read instructions carefully. After installation, store instructions for future reference.

Guangzhou Grandview Creative Technology Co., Ltd

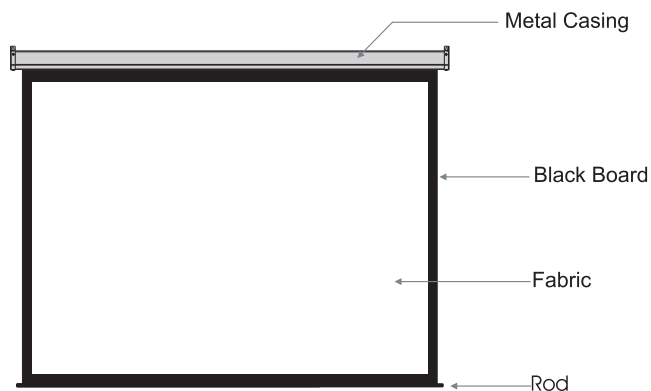
Add: No.1 Building of No.43 South International Trade Avenue, HualongTown,
Panyu District, Guangzhou China.

Tel: +8620-8489-9499 Fax: +8620-8480-5299

Web: www.grandviewscreen.com



Description



Accessories

- $\phi 10 \times 30$ mm screw and anchor (4pcs)



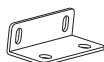
- M8x14 screw (4sets)



- Spring Washer (4pcs)



- Hanger (2pcs)



- External IR receiver (1pc)



- Remote Controller (1pc)



- Instruction Manual (1pc)

Warnings

- The ceiling or wall used for fixture installation must be secure to prevent the screens from falling.
- Please read the following as any damage to the screen surface will affect the quality of the picture:
 - 1.Avoid contact or touching the screen surface as it may cause scratches or tears.
 - 2.Do not write or draw on the surface.
 - 3.Do not damage the surface of screen by knife or finger
 - 4.Clean the screen with a soft cloth and lukewarm water. Do not use any detergent or cleaning
- Please retract the screen after using
- Make sure the Fixing screw be fastened when using the wall bracket, to avoid any damage.
- Roll up the screen after every use. Ensure that the screen is level when installing; do not pull on the sides or fold the screen.
- To prevent unnecessary damage, the operating and maintenance of the screen should be done by adults.



Ignoring the safety warnings may lead to injuries and/or damaging the product.



Fixtures should be installed in a secure place to avoid accidents or the screen falling.



Do not connect any electrical attachments or remote controls.



Roll up the screen after every use. Leaving it hanging for a long period of time may cause the fabric to loosen.



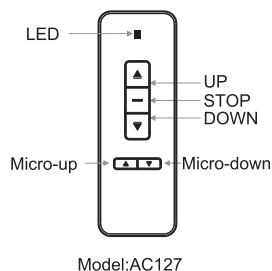
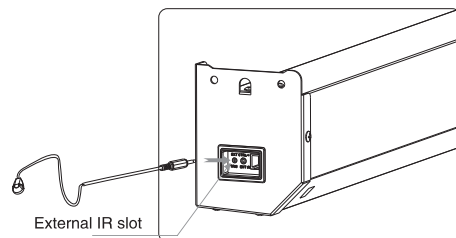
Please contact your local dealer for repairs or maintenance. Please contact our company if you have any further questions. Avoid taking apart the fixtures yourself. Loose parts may cause the screen to fall.



Refrain from hanging anything on the screen as it may cause the screen to fall.

Instructions

When the external IR connection is needed, please connect the IR extender to the extender slot and make sure the receiver is directly visible to the remote without barriers.



Button Function and Operation Instruction :

1. Press UP button to lift the screen
2. Press STOP button to stop the screen
3. Press DOWN button to lower the screen
4. Press MICRO-UP button to retract the screen in small increments (150ms for each movement)
5. Press MICRO-DOWN button to lower the screen in small increments (150ms for each movement)

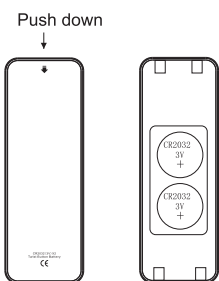
Cautions:

1. The minimum distance between Controller and Receiver: 50cm
2. Workable within 8m in horizontal direction from the Receiver to the Controller
3. Do not cover the Controller's launching port while operation
4. Strictly ban operation in wet or high temperature environment.
5. Replacing batteries when the signal is faint or no signal.
6. Batteries for the Controller: 2 units CR2032 button cells.

Batteries Installation Instruction:

When the signal of the Controller is faint, please replace the batteries as follow steps:

1. Reverse Controller to the back, push down as the arrow mark to open the cover.
2. Install two cells of battery and set the direction of positive and negative electrode just like the chart shows.
3. Close the battery cover.

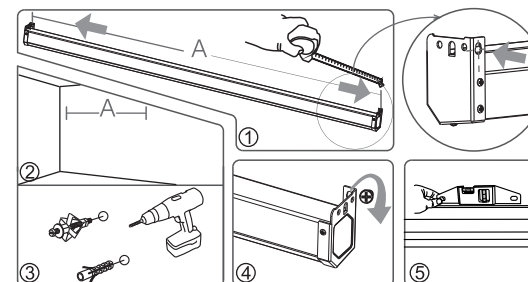


Installation

This projection screen should be installed at the best possible viewing position for the audience. Take out all the parts from the packaging and follow the accessories guideline to ensure you have all the parts. The parts needed will vary depending on which installation you choose to use. For installation on a wood wall or ceiling, use 5 x 40 anchors and screws.

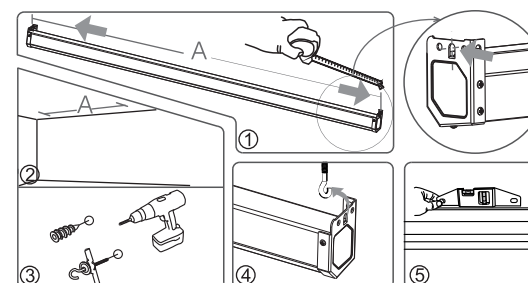
Wall Mount

Using a tape measure, measure the distance between the two keyholes on the casing (Figure 1). According to the measurement, use the drill to drill identical holes of the appropriate size (use a smaller drill bit than the actual screws) on the wall and ensure that it is level (Figure 2 and 3). Screw in the appropriate screws, either the 5 x 40 for wood walls or the 10 x 30 plus anchors for drywalls, leaving enough space at the end to hang the casing (Figure 4). To ensure that the screen is level, use a leveler to check (Figure 5).

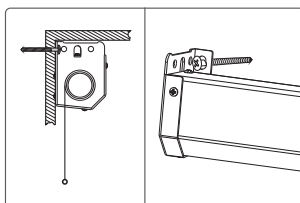


Ceiling Mount

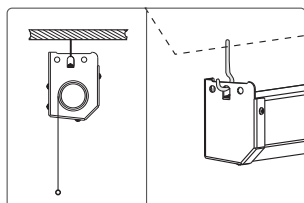
Using a tape measure find out the distance between the two keyholes on the casing (Figure 1). According to the measurement, use the drill to drill identical holes of the appropriate size on the ceiling and ensure that it is level (Figure 2 & 3). Screw in the hook screws (not provided), and lift the screen into the hook screws to hang (Figure 4). To ensure that the screen is level, use a level to check (Figure 5).



Wall Mount



Ceiling Mount



3

Fixed installation for ceiling

1. Install hanger to the end cap of casing via M8x14 screws (note: use the washer for the M8x14 screws) (figure 1-2)

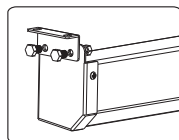


figure 1

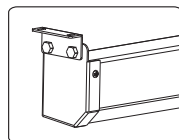
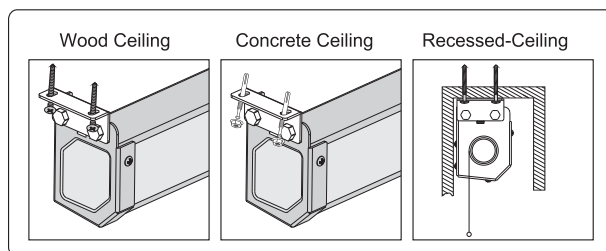


figure 2

2. Install the casing (include hangers) to ceiling via wood screws or tapping screws (not accessories)

Diagram for fixing on ceiling



Operation Instruction

Connecting to the external power:

1. Tear off the glue cloth fixed on the bottom rod, ensure the bottom rod is not stuck by the casing.
2. Switch on the power (within stated voltage).

How to use Manual/Remote Control Switch Button: (Figure 6)

The screen has four kinds of optional control methods: IR Remote Control, Manual Control, Trigger Control, External Control (Central Control or RS232/USB). When switching the Manual/Remote Control Switch Button to position "1", you can use Manual Control or Trigger to control up/pause/down of the screen. When switching to position "0", you can use IR Remote Control or External Control (Central Controller or Rs232/USB) to control up/pause/down of the screen.

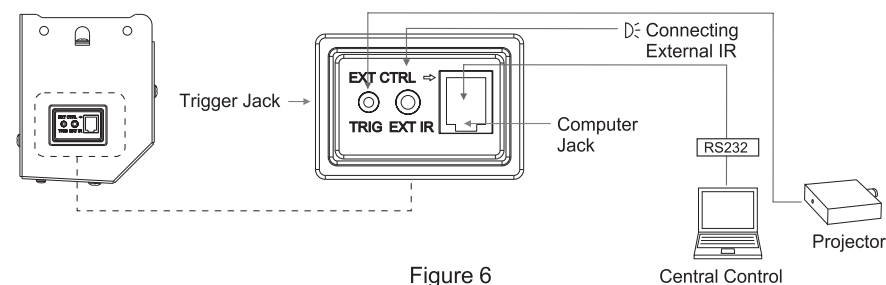
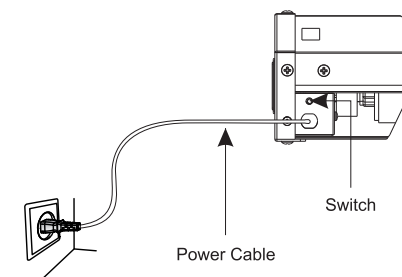


Figure 6

1. Manual Control

When you don't have remote in hand, you could use the manual control function on the screen, the switch is located on the left bottom side of the screen (by the side of power cable).



Instruction:

For each press on the switch, the screen will move down then stop and then up in order.

4