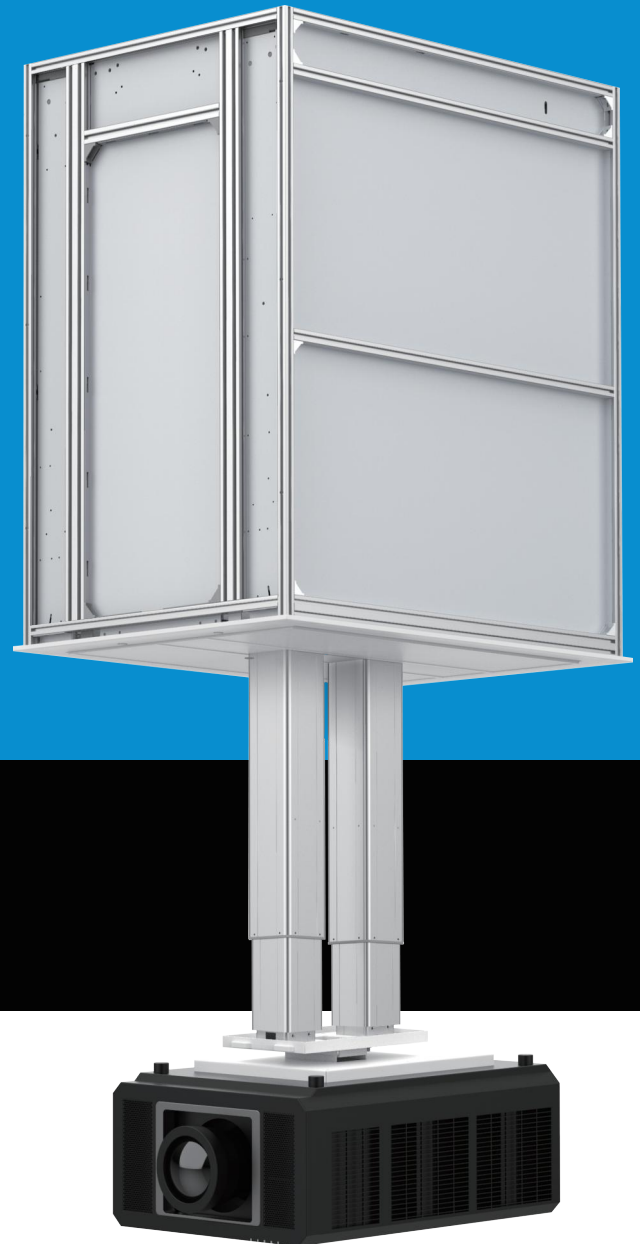


Grandview

GPAD/AC 76 Series Dual Telescopic Rod Projector Lifter

Supports
projectors up to
100KGS



GPAD 76

Product Features

Linear Shaft and Slider Transmission Assembly



The linear shaft and slider assembly ensures a smooth, stable lift without any vibration.

Electromagnetic Brake AC Motor



Equipped with an electromagnetic brake AC motor, delivering safe and reliable braking with noise levels below 55dB.

Anti-Fall Safety Device



The anti-fall protection system prevents the projector from dropping in case of any malfunction.

Proprietary Cable Extension Patent



The patented telescopic rod design integrates multiple power and signal cables, each guided by individual tension springs for synchronized and orderly extension.

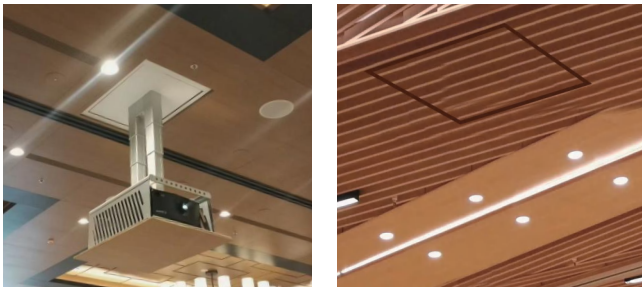
Main Features

- * Dual rod telescopic design for heavy-duty engineering projectors
- * Multi-section aluminum alloy square tubes with double-opening inner doors
- * GPAC's projector cage can connect to decorative ceiling panels matching the ceiling material
- * Patented cable management system
- * Lifting without load-bearing
- * Multiple protective anti-drop devices
- * Fully enclosed aluminum alloy frame, durable and strong
- * Industrial-grade long-running motor
- * High-precision encoder, positioning accuracy $\leq 1\text{mm}$
- * Projector universal mounting claws, adjustable at multiple angles
- * Built-in cables: Projector power cable $\times 1$, HDMI2.0 $\times 1$, Cat6 network cable $\times 2$
- * Positioning methods: RF positioning and 485 positioning
- * Control methods: RF, low-voltage dry contact, and RS485 encoding

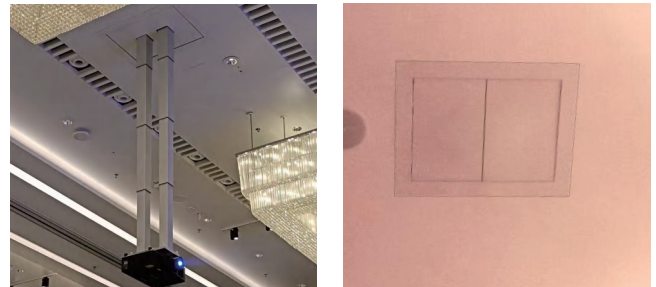


GPAC

GPAC Performance Overview



GPAD Performance Overview



Product Specifications Table

Model	Equipment Dimensions (mm) (DxWxH)	Compatible Projector Size (including cable and lens) (DxWxH)	Decorative Frame (mm)	Ceiling Opening Dimensions(mm) (DxW)	Ceiling Installation Space Required (mm)	Maximum Telescopic Travel (mm)	Net weight (kg)
GPAD7615/GPAC7615	1290x960x1160	950x720x400	1330x1000	1310x980	>1260	1500	180
GPAD7627/GPAC7627	1290x960x1460	950x720x400	1330x1000	1310x980	>1560	2700	199
GPAD7635/GPAC7635	1290x960x1660	950x720x400	1330x1000	1310x980	>1760	3500	203
GPAD7650/GPAC7650	1290x960x1780	950x720x400	1330x1000	1310x980	>1880	5000	226

GUANGZHOU GRANDVIEW CREATIVE TECHNOLOGY CO., LTD

A: No.1 Building of No.43 South International Trade Avenue, Hualong Town, Panyu District, Guangzhou China.

T: 86-20-84899499 F: 86-20-84805299

W: www.grandviewscreen.com



Grandview
website