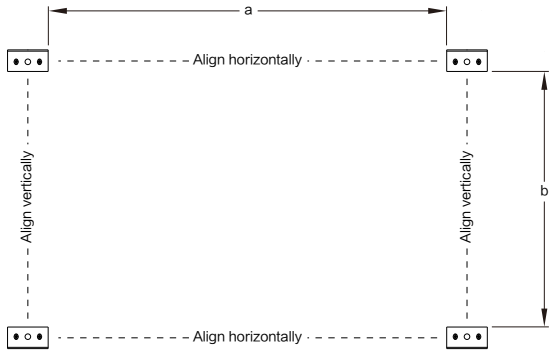


Installation for screen:

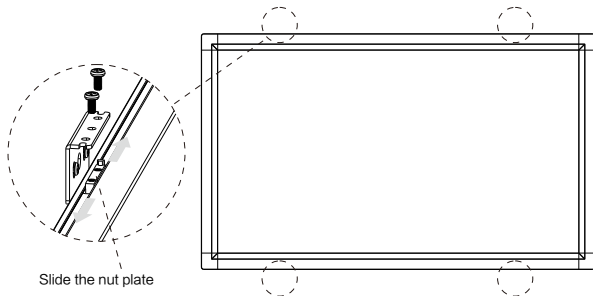
- Use tape to measure the overall length and height of screen. Then apply the following formula to calculate the distance of mounting brackets (please check below). Finally align the mounting brackets horizontally and vertically.

a: Horizontal distance: $0.6 \times$ overall length of screen

b: Vertical distance: overall height of screen minus 96mm.



- Slide the nut plates preinstalled in long black velvet frame to align with mounting brackets. Then drive tightly the Phillips screws with nut plates to finish installation of screen.



Grandview®

Grandview®

Maintainance

In order to maintain good performance of screen, please cover the screen with cloth if it is not used for a long term to prevent dust and dirt from screen. If there are apparent variars or dirt on screen material, please use soft brush or cloth to clean it.

Clean the screen material

Rub gently according to grain of velvet frame with warm water mixed with soft detergent. (Please be noted that it should be gently rubbed instead of scrubbing hard). Please prevent from hitting the frame in case of damage of velvet. By finishing cleaning, let frames dry itself.

Please do not use any dissolvent, chemical agent or any tool with strong friction for clean, which would cause permanent damage to the screen.



User Manual for Ultimate Series Fixed Frame Screen

Model: PP-xx (R1)

Guangzhou Grandview Creative Technology Co., Ltd

Add: No.1 Building of No.43 South International Trade Avenue, HualongTown,
Panyu District, Guangzhou China.

Tel: +8620-8489-9499 Fax: +8620-8480-5299

Web: www.grandviewscreen.com



Dear Customer:

Thanks for your purchasing Grandview product of Prestige Series Fixed Frame Screen. Please go through the user manual before use. Please keep the user manual well for future reference.

Preparation for installation

Parts:



Long black velvet frame × 2 pcs



Short black velvet frame × 2 pcs



Mounting bracket × 4 pcs



Screen material × 1 pcs



Snap lug x some



Long tension rod × 2 pcs

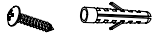
Short tension rod × 2 pcs



Grub hexagon screw × 4 pcs



Phillips screw × 8 pcs



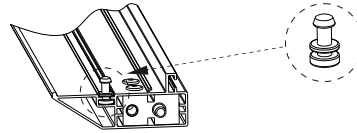
tapping screw × 8 pcs
expansion fixture × 8 pcs

- Please prepare for suitable tools such as gradienter, tape, marker, hexagon key, etc
- Please make sure precise installation distance and proper installation position for upper and nether mounting brackets.
- Use the proper screws for installation according to the site. (use tapping screws for wooden wall and tapping screws with expansion fixture for concrete wall)

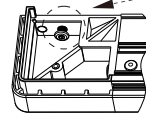
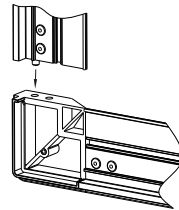
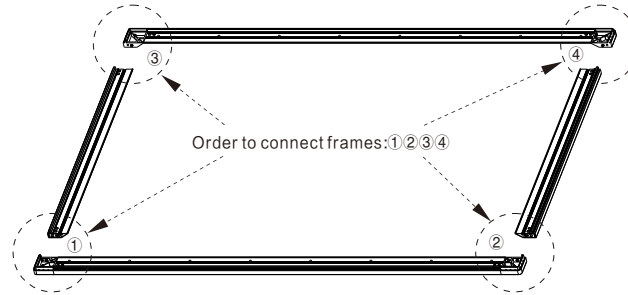
Instruction for installation

Assembly of frames:

- Insert the snap lugs into long and short black velvet frames according to the number of round holes on the edge of screen material.



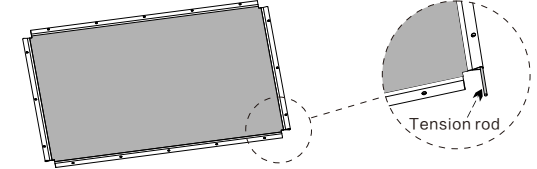
- Put the long and short frames on clean floor with the rear side up to form a rectangle shape, please see below:



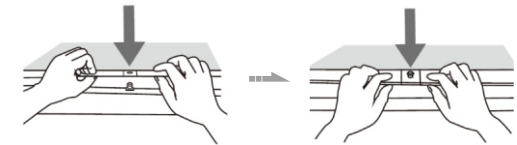
- Connect long frame with short frame by inserting locating pin on short frame into the hole on long frame. Then insert grub hexagon screw to drive tightly with hexagon key according to the order mentioned above.

Installation of screen material:

- Face the screen material rear side up and lay it flat on clean floor. Insert the tension rod from the tunnel of screen material (advise to insert tension rod by two people to avoid damage of fabric). Please check below:



- Lay flat screen material on the connected frame (both of frame and screen material should face rear side up), then align snap lugs with holes on screen material one by one. And then fix the screen material on the frame by inserting snap lugs through the holes on screen material. Please check below:



- After inserting all of snap lugs through holes on screen material, necessary adjustment would be needed to make to assure screen material has no wrinkles with well-distributed tension.

