

Grandview



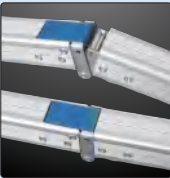
Portable Series
Super Mobile Screen



Super Mobile Series

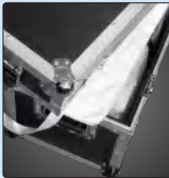
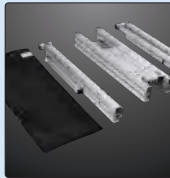
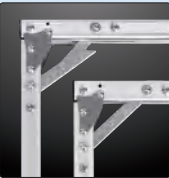
Large Stage Portable Solution

- Innovative and sturdy design - aluminum alloy frame, foldable frame with fold-and-lock mechanism.
- Multiple pressure points to ensure screen is flat and wrinkle-free.
- Tool free installation - it only requires 10 minutes to set up a 200" screen.
- Available with a commercial grade portable flight case for travelling.



Easy Setup

With the easy to use fold-and-lock mechanism, the frame is easy to set up and takedown. The design structure ensures the screen is sturdy and stable.



Great Portability

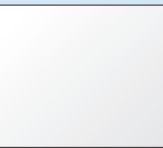
The foldable aluminum alloy frame and screen fabric can easily be transported in the commercial grade portable flight case.



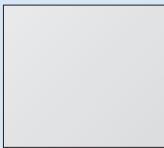
Flat and Wrinkle-Free Screen

With multiple pressure and stretch points, not only is it easy to install quickly but it also ensures the large screen is flat and wrinkle-free.

Fabric Types



Front Projection PS White Fabric



Rear Projection PS Grey Fabric



Specifications

Aspect Ratio	Diagonal (inch)	Viewing Area W x H (mm)	Overall Length L (mm)	Overall Height A (mm)	L&R Black Border B1 (mm)	Top & Bottom Black Drop C1 (mm)	H1 (MAX / MIN)	H2 (MAX / MIN)	H2 (MAX / MIN)	Freight Case Dimension	Net Weight (Kg.)
4 : 3	100"	2032 × 1526	2202	2440	85	85	705/250	2400/2280	2400/2280	1008x331x336	25
	120"	2438 × 1828	2618	2960	90	90	950/203	2960/2700	2960/2700	1158x331x336	27
	150"	3048 × 2286	3256	3590	103	103	1095/183	3590/3188	3590/3188	1393x331x336	30
	180"	3658 × 2743	3864	4153	100	100	1280/221	4153/4024	4153/4024	1390x510x410	33
	200"	4066 × 3048	4248	4313	91	104	1056/221	4313/4204	4313/4204	1390x510x410	34
	250"	5083 × 3811	5303	5511	110	110	1505/515	5511/5286	5511/5286	1685x535x500	52
	300"	6096 × 4572	6324	6495	114	114	1717/527	6495/6126	6495/6126	1670x470x650	67

