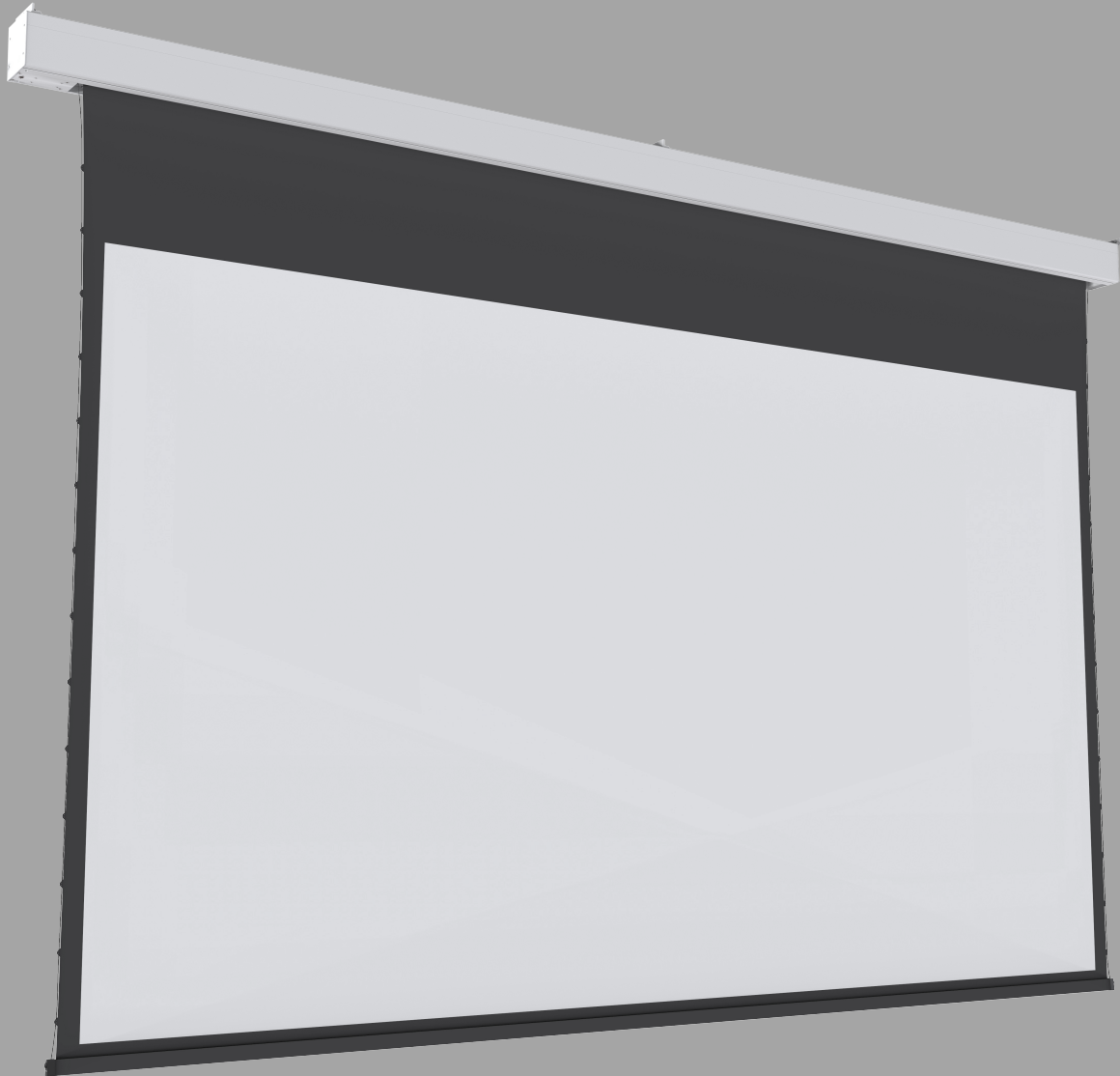


Large Stage Series

Motorized Tab-Tension MA



4K

4K compatible

Diagonal: 200" - 300"

Ratio: 4:3/16:9/16:10/2.35:1

Multiple control methods:
in-line switch / wireless remote control / RS485/dry contact

Large Stage Series Motorized Tab-Tension MA

The Grandview Large Stage Series Motorized Tab-Tension MA Screen is purpose-built for demanding, large-scale installations. Its lightweight yet high-strength aluminum casing ensures durability, while the oversized reinforced roller tube provides exceptional support during operation. This robust design carries the weight of large fabrics without mid-span sagging, effectively eliminating “V-shaped” wrinkles.

Powered by a high-performance industrial motor with an integrated DC magnetic brake, the system delivers safe, reliable, and continuous operation. Engineered for heavy-duty performance, it maintains stability even under extended runtimes.

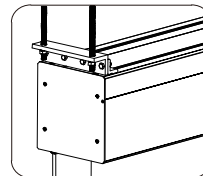
Self-lubricating universal bearings minimize noise and vibration, ensuring smooth, quiet movement while reducing long-term mechanical wear. This contributes to a longer service life and dependable performance over years of use.

The precision tab-tensioning system applies uniform tension across the entire surface, eliminating wrinkles and edge curl that often affect traditional large-format screens. Even at sizes up to 300 inches, the screen remains perfectly flat, reproducing images with true-to-life clarity and distortion-free detail.

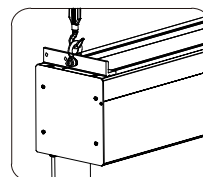


Application

- Maximum Viewing Area: 300"
- Flexible Control Options
Wired switch/Wireless remote control/RS485 interface/Dry contact trigger
Multiple control interfaces ensure compatibility with various automation systems and usage scenarios.
- Screen Tension Adjustment Bar
Includes a precision tensioning system that allows fine-tuning of the screen surface flatness for optimal projection quality.
- Versatile Installation Solutions: Ceiling-mounted/Suspension-mounted
Adaptable to a wide variety of installation environments and venue types.



Bolt-fixed hanging



Adjustable hook suspension

Key Features



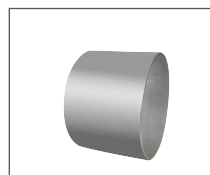
Physical Travel Counter

Factory-set limit switches ensure the screen stops precisely at pre-configured upper and lower positions, preventing over-travel. This guarantees complete image display while protecting the motor and lifting mechanism from damage caused by excessive operation.



Electronic Encoder

Allows users to easily set upper and lower limits, adding convenience and precision.



Precision Roller

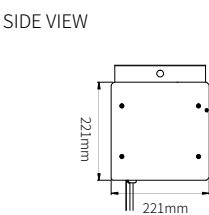
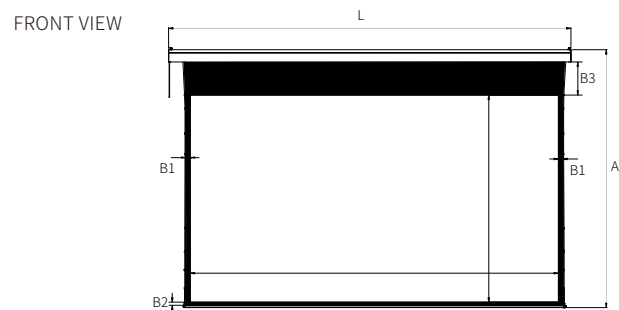
A 147 mm diameter roller tube, manufactured to ultra-precise straightness standards, guarantees stability even at lengths up to 7 meters, with deflection of no more than 3.5 mm.



Heavy-Duty Motor System

Designed for continuous operation under high-load conditions, with a reliable DC magnetic brake ensuring safety and stability.

Product Specifications



(unit: mm)

Proportion	Diagonal Measurement	Viewing Area (W×H) mm	Black Drop (B3) mm	Lower Border (B2) mm	Left/Right (B1) mm	Product Height (A) mm	Product Length (L) mm
4:3	200"	4064×3048	600	80	80	4014	4677
	220"	4470×3353	600	80	80	4319	5083
	240"	4877×3658	600	80	80	4624	5490
	250"	5080×3810	600	80	80	4776	5693
	280"	5690×4267	600	80	80	5233	6303
	300"	6000×4500	600	80	80	5466	6613
16:9	200"	4428×2491	600	80	80	3457	5041
	220"	4870×2740	600	80	80	3706	5483
	240"	5313×2989	600	80	80	3955	5926
	250"	5535×3113	600	80	80	4079	6148
	280"	6199×3487	600	80	80	4453	6812
	300"	6641×3736	600	80	80	4702	7254
16:10	200"	4308×2692	600	80	80	3658	4921
	220"	4739×2962	600	80	80	3928	5352
	240"	5169×3231	600	80	80	4197	5782
	250"	5386×3365	600	80	80	4331	5998
	280"	6031×3769	600	80	80	4735	6644
	300"	6462×4039	600	80	80	5005	7075
2.35:1	200"	4674×1989	600	80	80	2955	5287
	220"	5142×2188	600	80	80	3154	5755
	240"	5609×2387	600	80	80	3353	6222
	250"	5843×2486	600	80	80	3452	6456
	280"	6544×2785	600	80	80	3751	7157

